

***Water Services  
Investment  
Programme  
2010 - 2012***



Comhshaol, Oidhreacht agus Rialtas Áitiúil  
Environment, Heritage and Local Government



# Contents

<b>Minister's Foreword</b>	<b>3</b>
<b>Part 1 - Overview of Water Services Investment Programme 2010-2012</b>	<b>5</b>
<b>Part 2 - Water Services Investment Programme - Details of Contracts and Schemes by River Basin District</b>	<b>17</b>
Eastern River Basin District	18
Neagh/Bann International River Basin District	25
North Western International River Basin District	28
Shannon International River Basin District	31
South Eastern River Basin District	38
South Western River Basin District	45
Western River Basin District	50
<b>Appendix 1 Water Services Investment Programme - Details of Contracts/Schemes Completed 2007-2009</b>	<b>55</b>
<b>Appendix 2 Water Services Investment Programme - Water Conservation Element</b>	<b>60</b>

# Minister's Foreword

Water is a precious resource. Our fundamental goal is to deliver quality drinking water and effectively treat wastewater consistent with sustainable development. The achievement of this goal necessitates a multi-faceted response encompassing the governing legal, policy and economic framework, the supervisory and monitoring regime, our investment strategy, as well as the combined efforts of many stakeholders and individuals who assist in protecting and conserving our valuable water resources.



Substantial benefits have accrued from the investment of €4.6 billion of Exchequer resources over the past decade. The record resources which the Government is continuing to provide for water services infrastructure are a demonstration of our strong commitment in this area.

The Water Services Investment Programme 2010-2012 is a three-year rolling funding plan for the provision of major water supply and wastewater infrastructure. Together with the Rural Water Programme, it plays a key role in giving effect to the Government's commitment to:

- preserving and protecting our water resources as a key element of environmental policy,
- achieving good status in waters by 2015 and ensuring that water quality does not decline in any waters, in line with the Water Framework Directive,
- meeting National and EU standards for drinking water and wastewater treatment,
- putting critical infrastructure in place that will ensure ongoing support for industrial, commercial and other development, and
- prioritising investment in water conservation measures including remedying leaks and demand reduction measures.

Strategic environmental and economic objectives have provided the rationale for investment in water services infrastructure since 2000. With the changed economic climate and the emergence of the first cycle of River Basin Management Plans by local authorities this year, there is a greater need than ever to focus on key environmental and economic priorities.

The Programme for 2010 - 2012 prioritises projects that target public health and environmental compliance issues, rehabilitation of existing water supply networks and projects which support economic and employment growth as envisaged in the Government's policy document *'Building Ireland's Smart Economy – A Framework for Sustainable Economic Revival'*. The specific environmental and economic pressures that have emerged in recent years and which have informed project selection in the Programme are:

- the need to deal with the very high levels of unaccounted for water in many of our public water supplies through a much greater emphasis on repair and replacement of water mains;
- Environment/Public Health Objectives, including works required to meet drinking water and wastewater treatment standards, and the requirements of the Water Framework Directive; and
- Economic objectives, including works to support:
  - the overall strategic and sustainable development of Hubs and Gateways under the National Spatial Strategy as well as strategically located developing areas under the developing areas initiative, and
  - Employment creation (in line with objectives in *'Building Ireland's Smart Economy – A Framework for Sustainable Economic Revival'*).

As part of the review of Programme priorities, the need for a greater emphasis on water conservation was clear. It does not make sense from an economic or environmental perspective to invest in expanding water treatment capacity if there is a significant loss of treated water in ageing or damaged networks. The Programme, therefore, targets greater resources towards water conservation, specifically mains rehabilitation, building on the work that has already been undertaken in developing water management systems and active leakage control.

This investment is only part of the overall action on water conservation. Water metering is also essential to ensuring that our valuable water resource is managed and used efficiently. Metering of the non-domestic sector is now largely complete. Proposals are being developed to implement the Government's decision to introduce charges for water for households in a way that is fair, significantly reduces waste and is easily applied. It is envisaged that the installation of water meters on households will commence during 2011. Other innovative measures in demand reduction, which will be facilitated by the introduction of metering, are also planned.

Conservation measures are, however, just one part of the sustainable management of water. Continued improvements in water quality in line with new standards introduced as part of the implementation of the Water Framework Directive, are contingent on the provision of improved wastewater treatment facilities. It is envisaged that integrated constructed wetlands will play a role in providing such facilities particularly in smaller rural locations. An initiative on this will be announced later in the year, following the publication of relevant guidance which is being prepared by my Department.

The Programme for 2010 - 2012 reflects some structural changes from previous formats. There is a greater focus on progressing key contracts within schemes that will deliver results in the short to medium term with other contracts within those schemes being advanced over the medium to longer term. The Needs Assessments undertaken by local authorities in their areas last year was a critical input to the development of this approach and the new Programme. Consultation with other stakeholders in the environmental and economic spheres has also been important.

Value for money is a key consideration in funding the Programme. There will be an intensification of effort in protecting capital investment by channelling resources into ensuring that those involved in the operation and maintenance of water services infrastructural works have the skills and training required.

Water services require considerable energy use with consequent cost and greenhouse gas emission implications. All contracts and schemes under the Programme are being required to implement best practice in relation to energy efficiency and greenhouse gas emissions. They must also take account of the development of national policy on adaptation to the inevitable impacts of climate changes.

The Programme details just over 130 contracts and water conservation projects in progress with a value of about €1 billion, some 340 contracts to be progressed to construction over the period 2010 – 2012 with a value of €1.8 billion and some 190 schemes and water conservation projects on which planning work will continue.



John Gormley T.D.,  
Minister for the Environment, Heritage and Local Government.

# Part 1

## Overview of Water Services Investment Programme 2010-2012

### Introduction

The high level goal of the Water Services Investment Programme (WSIP) 2010 - 2012 is to ensure that the timing and scale of water services investment facilitates economic and other development, compliance with statutory requirements for drinking water and wastewater treatment and the achievement of environmental sustainability objectives. A multi-annual approach to investment has been adopted since 2000 to aid the proper planning and delivery of required infrastructure to meet these goals. Together with the Rural Water Programme, the WSIP plays a key role in giving effect to the Government's commitment to:

- preserving and protecting our water resources as a key element of environmental policy,
- meeting National and EU standards for drinking water and wastewater treatment, and
- putting critical infrastructure in place that will ensure ongoing support for industrial, commercial and other development.

Some €4.6 billion in Exchequer resources has been invested in the water services sector over the past decade. This has included €3.7 billion under the multi-annual Water Services Investment Programmes which, allied with €900 million spent from water services authorities own resources, facilitated the completion of some 480 major water and wastewater public schemes over the period 2000 to 2009. As a result,

- compliance with the EU Urban Waste Water Treatment Directive on secondary wastewater treatment facilities now stands at some 92%, compared to 25% at the start of 2000.
- Additional wastewater treatment capacity equivalent to the needs of a population of 3.6 million has been provided,
- Treatment capacity for drinking water has increased by a level equivalent to the needs of a population of 855,000 (ie. 214 million litres per day) and storage capacity has increased by a level equivalent to the needs of a population of 1,510,000.

### Achievements under the Water Services Investment Programme 2007-2009

Exchequer spending on the WSIP during the period 2007-2009 amounted to some €1.17 billion. Some 120 contracts/schemes, as set out in Appendix 1, were completed in this period, including Ballina Sewerage Scheme, Balbriggan/Skerries Wastewater Treatment Plant (Phase 2), Dublin North Fringe Water Supply Scheme (Sillogue Storage) and water supply schemes at Letterkenny and Carna/Kilkieran.

A further 172 major contracts/schemes commenced during the period and 130 contracts and water conservation projects were in progress at the end of 2009. This included wastewater treatment plants at Bray/Shanganagh, Kinsale and Mullingar and water supply schemes for Longford Central Regional, Sligo & Environs and Navan/Mid-Meath supplies.



**Waterford City Wastewater Treatment Plant**

### **Preparation of the Water Services Investment Programme 2010-2012**

The water services sector is entering into a new phase with the implementation of the Water Framework Directive, which operates a catchment-based approach to water resources management considering all aspects of the water cycle within River Basin Districts. River Basin Management Plans, required under this Directive, are the key tool for the strategic planning of the range of actions required by the different actors to meet the objectives of the Directive. These objectives are to prevent deterioration in the status of existing waters and, where feasible, to achieve at least “good status” in relation to our waters by 2015. Consequently, the preparation of the WSIP 2010-2012 has been aligned with the priorities identified for the River Basin Management Plans to be adopted by local authorities.

Taking cognisance of the development of the first cycle of River Basin Management Plans and the changed economic climate, a key objective underpinning the preparation of this new Programme was the need to prioritise projects that target environmental compliance issues and fully support economic and employment growth as envisaged in the Government’s policy document *‘Building Ireland’s Smart Economy – A Framework for Sustainable Economic Revival’*.

The development of the Programme has also taken into account relevant Environmental Protection Agency (EPA) Reports on drinking water and wastewater discharges, the 2008 Forfás Report - *Assessment of Water and Wastewater Services for Enterprise* (which recommended prioritisation of investment for key centres which are likely to require additional water and wastewater treatment capacity in the coming years) and the need to support the economic development of Gateways and Hubs (and in specific developing areas in these locations) in accordance with the National Spatial Strategy.

A key input to all of the rolling Water Service Investment Programmes has been the periodic assessment of needs by local authorities. Following consultation with the County and City Manager’s Association, the Department initiated some changes to the approach in the Needs Assessment process for 2009, to ensure that investment is focussed on key priorities and that the resulting programme is realistic in its level of ambition, in terms of the affordability and

deliverability of the works included. Needs Assessments from all 34 Water Services Authorities were prepared over the Summer of 2009 and submitted to the Department in October/November 2009.

A key change in the approach to the Needs Assessment for the WSIP 2010-2012, was that all existing schemes which had not sufficiently advanced under earlier Programmes were reviewed to ensure that they:

- have continuing relevance in light of the Programme priorities;
- reflect an appropriate scale of works in light of these priorities and timescale for delivery;
- are appropriately phased;
- are affordable and offer value for money; and
- represent the most cost effective solution to addressing the identified problem.

The new Programme, therefore, takes a different approach to the progression of major water and wastewater projects. While medium to longer term planning on major schemes will continue, there will be a new emphasis on contracts which deliver on infrastructure that is needed in the shorter term. A distinction is, therefore, made between contracts being progressed to construction and schemes (comprising of many potential contracts) being progressed through planning. Water conservation projects have been fully integrated into the Programme, rather than operating as a sub-programme as heretofore. The presentation of contracts and schemes has also been changed to a River Basin District format, to clarify the wider impacts of the investment proposals and to fully show the response that the Programme is making to priorities identified in Ireland's first set of River Basin Management Plans prepared under the Water Framework Directive.

### **Programme Priorities**

The specific environmental and economic pressures that have emerged in recent years and which have informed project selection in the Programme are:

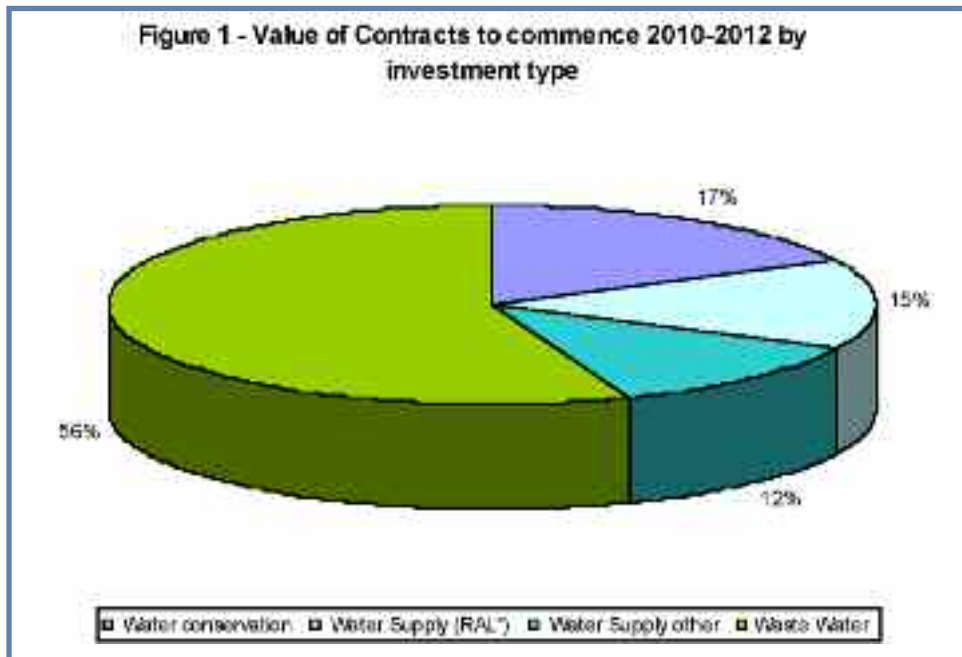
- Water conservation proposals which meet environmental and economic goals.
- Environmental objectives – works required to respond to:
  - Judgments of the European Court of Justice,
  - Environment/Public Health Objectives (e.g. arising from Regulations and EPA Reports dealing with drinking water standards, wastewater treatment standards, authorisation of wastewater discharges, bathing water standards, Pollution Reduction Programme for Shellfish Waters, fresh water pearl mussel plans, etc), and
  - Compliance with the Water Framework Directive requirements.
- Economic objectives – works to support:
  - The overall strategic and sustainable development of Hubs and Gateways under the National Spatial Strategy (NSS) as well as strategically located areas which have the potential to develop when the economy recovers, and
  - Employment creation (in line with objectives in *'Building Ireland's Smart Economy – A Framework for Sustainable Economic Revival'*).

### **Key features of the Water Services Investment Programme 2010-2012**

In addition to the 130 contracts and water conservation projects in progress at the end of 2009, the new Programme provides for the commencement of some 340 contracts over the next three years, at a gross estimated cost of over €1.8 billion. A further 190 schemes and water conservation projects will be advanced through planning in this period. The inclusion of the schemes in the Programme at this stage, reflects the priority need for investment to

address an environmental or economic need. The precise scope, phasing and cost of such schemes will be determined through more detailed appraisal during the planning phase, which will also take account of relevant statutory processes. Water Services Authorities will also plan the next phases of water conservation work during this period, in the light of priorities set in mains rehabilitation strategies.

Over the past decade, about two-thirds of spending under the Water Services Investment Programme has been on wastewater infrastructure, mainly reflecting the investment requirements necessary to ensure compliance with the EU Urban Waste Water Treatment Directive. The National Development Plan recognised that with the completion of many major wastewater schemes, a greater proportion of funding could be directed towards water supply. This is the case in the new Programme, where water conservation and water supply contracts will account for 53% of all contracts to commence in the 2010 to 2012 period.



\* Investment to address supplies on EPA "Remedial Action List"

## Water Conservation

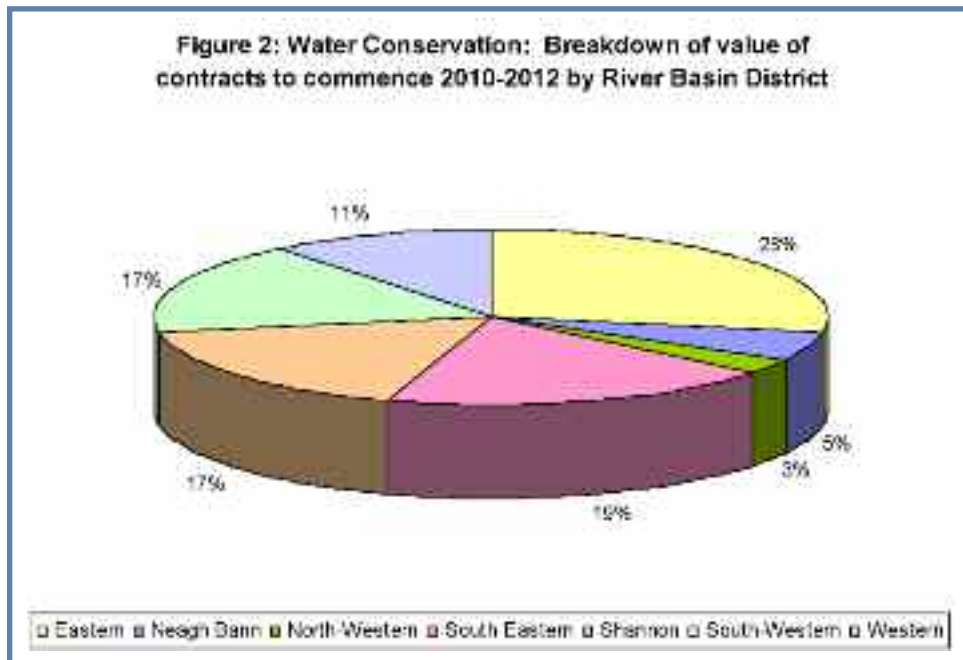
The new Programme builds on existing investment in water conservation, which has seen €130 million spent on various water conservation measures over the past seven years. This investment has largely been focussed on putting in the water management systems to allow for active leakage control and better planning of mains rehabilitation. Most Water Services Authorities have now completed or are close to completing the initial phases of this programme and this provides an important platform for identifying the areas which have the highest leakage levels and for targeting investment in mains rehabilitation.

The WSIP 2010-2012 allows for a significant acceleration in the level of investment in this area, providing for contracts with a total value of some €321 million to commence in the period 2010 to 2012. This level of funding should allow for the rehabilitation of some 640km of water mains which is almost 3% of the national public network. Funding is particularly targeted at areas where the level of unaccounted for water (UFW)<sup>1</sup> is unacceptably high. Over time, this investment should lead to marked reductions in UFW and progress in this regard will continue to be monitored on an annual basis through the local authority service indicator process<sup>2</sup>. Funding is

<sup>1</sup> Unaccounted for Water is the amount of water (generally expressed as a percentage) which enters a distribution system and which cannot be accounted for by legitimate use.

<sup>2</sup> See "Service Indicators in Local Authorities, 2008" – Local Government Management Services Board, 2009

available for the replacement of lead connections on the public supply side, in order to meet the current and 2013 limits for lead in water. It is expected that Water Services Authorities would prioritise any such works required in developing their Mains Rehabilitation Strategies, taking account of EPA guidance. The water conservation element of WSIP 2010-2012 is identified separately in Appendix 2 for ease of reference.



## Water Supply

Water Service Authorities currently treat over 1.6 billion litres of water daily. EPA data for 2007<sup>3</sup>, based on results from the 952 public water supply zones which are the responsibility of Water Service Authorities, indicates that 98% of public water supplies sampled are in overall compliance with drinking water standards.

However, the EPA has identified a number of supplies which required detailed profiling to ensure that the supply is providing clean and wholesome drinking water. This list, known as the “Remedial Action List”, was first published by the EPA in 2008 and was updated in 2009 reflecting progress made on resolution of issues as well as adding new supplies where risks were identified through the monitoring and supervisory role of the EPA. Detailed profiling of supplies on this Remedial Action List has been undertaken to determine the need for operational improvements and/or investment requirements, or in some limited cases the abandonment of the supply. In the majority of cases where investment is required, this involves only small scale upgrades. A special contingency fund under the Rural Water Programme was established to address these upgrades and some €18 million was allocated to Water Services Authorities for this purpose. Where the issue was best addressed through a scheme under the WSIP 2007-2009, the Department encouraged Water Services Authorities to advance works to address the quality issues.

This process has been reinforced by the approach under the new Programme, which prioritises contracts to be advanced in the medium term to deal with drinking water quality issues. The new Programme includes some €274 million to allow for the commencement of contracts in respect of supplies on the Remedial Action List. Where risks are identified by the EPA in future reports, the Department will work with the EPA and Health Services Executive, to identify the most appropriate and effective solution, and where necessary, any proposed contract can be added to the Programme through the annual review process outlined on page 15.

<sup>3</sup> See “The Provision and Quality of Drinking Water in Ireland 2007-2008 – EPA, 2009”



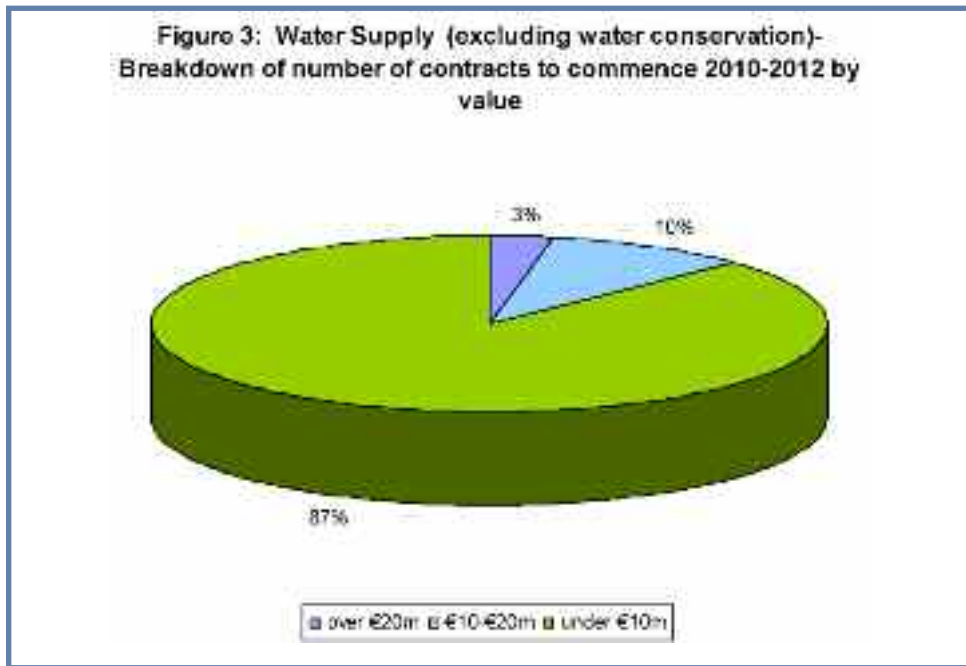
Clareville Water Treatment Plant, Limerick

The Programme also seeks to sustain the quality of drinking water through investment to upgrade treatment plants and networks, and new works to build capacity to meet economic and demographic requirements or ensure security of supply. Analysis by Forfás in 2008, indicated that while most Gateways and Hubs are well positioned to meet future demand for water, future investment was necessary to address forecast deficits in some areas by 2018. In addition to recommending that investment should be prioritised for Gateways and Hubs in future Water Services Investment Programmes, the Forfás report also highlighted the need to address unacceptable levels of unaccounted for water, and suggested that proposals to increase capacity should not attract funding in the absence of action plans to reduce leakage. This recommendation was reiterated by the High Level Group on Green Enterprise<sup>4</sup>.

These principles have underpinned the approach to water supply investment under this Programme, which has concentrated firstly on water quality and conservation issues, but recognised that there will be areas where investment is required in tandem with conservation measures to meet future demand. A number of major contracts and schemes in the WSIP 2010-2012 address the requirement for capacity increases particularly in Gateways and Hubs and other developing areas. Therefore in addition to the funding of water conservation (€321 million) and investment in schemes to deal with supplies on the Remedial Action Programme (€274 million), the Programme also provides for contracts with a total value of €216 million to commence over the period 2010 to 2012 which are designed to sustain and enhance existing supply. While the average value of such contracts is just under €5 million, there are a number of significant contracts valued at over €15 million, in the counties of Offaly, North Tipperary, Kerry and in Cork City. The largest area of investment relates to the Greater Dublin Water Supply Area<sup>5</sup>, where the Programme provides for the continued consideration of the options for a scheme to provide a new long-term source to service growth in demand in the Greater Dublin Area. The planning of all schemes in the Programme which propose increases in water supply capacity will take account of the degree to which water conservation measures can ameliorate the situation.

<sup>4</sup> “Developing the Green Economy” – Report of the High Level Group on Green Enterprise (November 2009)

<sup>5</sup> The Greater Dublin Water Supply area consists of Dublin City, Fingal, Dun Laoghaire-Rathdown and South Dublin, significant areas in East and West Wicklow (including Bray), mid and north Kildare and south-eastern areas of Meath.



### Wastewater Infrastructure

Water Services Authorities are responsible for, directly or indirectly, wastewater treatment provision in some 482 agglomerations with a population equivalent of more than 500. Work required under the Urban Wastewater Treatment Regulations to meet the end of 2005 deadline for the provision of secondary wastewater treatment at wastewater treatment plants has been the key determinant of funding under recent Water Services Investment Programmes from an environmental compliance perspective. Work in only a relatively few agglomerations remains to be completed to achieve full compliance with this deadline.



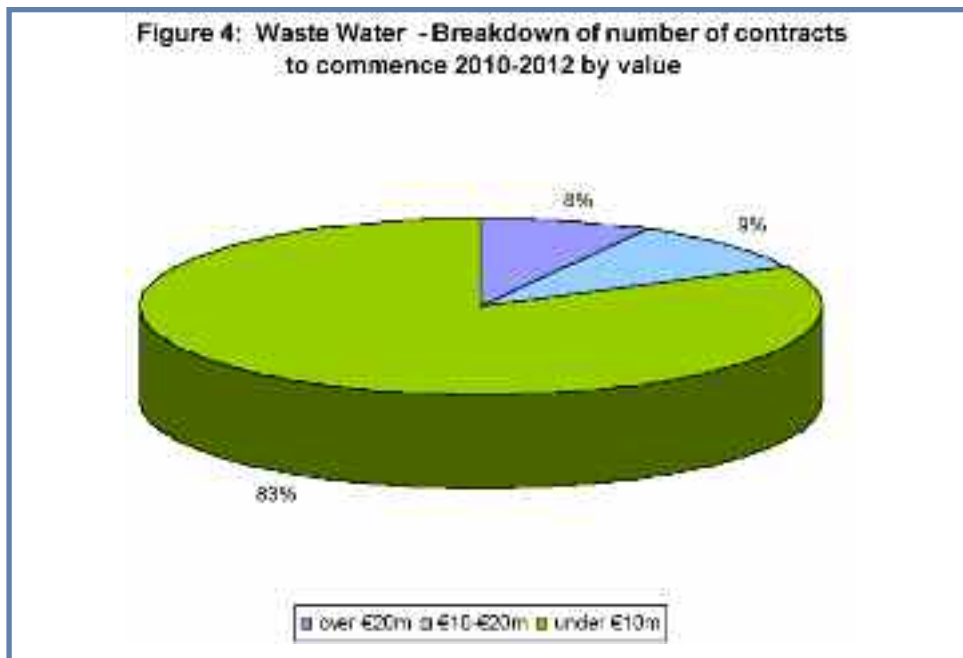
Wicklow Wastewater Treatment Plant

The priority for investment in wastewater infrastructure over the coming years is to ensure compliance with the Water Framework Directive and to meet forecasted increases in demand; the Needs Assessments of Water Services Authorities were analysed from that perspective. The need to promote more sustainable development patterns and support economic development in Gateways and Hubs under the National Spatial Strategy and in developing areas, are also key requirements in prioritising the need for increased wastewater treatment capacity.

The investment for 2010 to 2012 in wastewater is targeted at priority contracts and schemes, taking account of the priority requirements identified to date, including

- the River Basin Management planning process,
- the licensing regime introduced on a graduated basis since the adoption of the Waste Water Discharge (Authorisation) Regulations, 2007<sup>6</sup>,
- Shellfish Water Pollution Reduction Plans, and
- Forfás analysis of wastewater infrastructure needs of Gateways and Hubs.

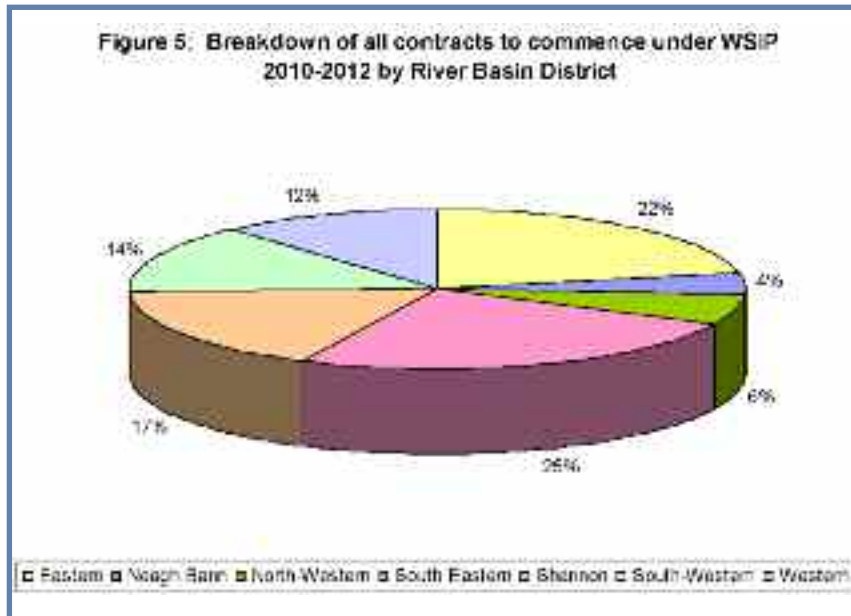
Some 160 contracts are included in the Programme to start in the period 2010-2012 with a total value of about €1 billion. While the average contract value will be about €6.5 million, much larger contracts will be advancing in Dublin, Donegal, Offaly, Kildare, Westmeath and Laois, including a number required to meet forecasted deficiencies in capacity in the coming decade. Almost 100 schemes dealing with aspects of wastewater treatment are expected to advance through planning in the Programme period. This includes very large scale projects proposed for the Greater Dublin area and Galway to support future economic development needs and a large scale scheme for Cork Lower Harbour which is intended to improve the water quality in Cork harbour.



<sup>6</sup> These regulations provide for an authorisation system for all wastewater discharges to waters from treatment plants or collection systems owned or controlled by local authorities. Under the regulations, local authorities may not cause or allow discharges from wastewater facilities except in accordance with EPA requirements.

## Regional Distribution of Investment

The WSIP for 2010 to 2012 is presented in Part 2 on a River Basin District basis. The level of investment in the seven River Basin Districts varies, reflecting the differing size, population and the investment needs of the Districts, as Figure 5 below indicates. Details of the schemes completed under the Water Services Investment Programme 2007-2009, as set out at Appendix 1, reflect a good regional spread and include some 40 schemes advanced under the Rural Towns and Villages Initiative which is now integrated into the Programme.



The overall level of investment is generally evenly spread between the requirements of significant urban centres such as Gateways/Hubs identified in the NSS and other urban and rural areas in the country. In line with the report of the National Competitiveness Council (April 2009), the objective of most contracts/schemes in Gateways and Hubs in the new Programme is to address emerging and future constraints in capacity and to ensure security of supply. In addition the Programme recognises the need for investment outside of these areas to facilitate a strong rural economy. For example, the Programme includes significant investment for

- wastewater schemes for Bundoran/Killybegs Co. Donegal, Bandon Co. Cork and grouped schemes to provide infrastructure in villages/towns in West Cork, and counties Laois, Waterford and Roscommon amongst others;
- water schemes involving major investment for the supply of water, for example, the Central Regional in County Kerry, Costello in County Galway and Lough Mask Regional in County Mayo.

The priorities identified in the River Basin Management Plans and the EPA Remedial Action List has assisted in the selection of the contracts required to address environmental and public health issues respectively. The Programme also provides for an annual review which will allow a detailed assessment to be undertaken as to the need for additional investment in essential development-related water supply or wastewater-related investment in key villages and smaller towns arising from the implementation of local authority development plan “core strategies” as provided for under the Planning and Development (Amendment) Bill 2009.

Investment in rural areas will also be supplemented by annual allocations under the Rural Water Programme. Block grants to Water Services Authorities under this Programme will amount to some €85 million this year and further

significant investment is planned over the remainder of the 2010-2012 Programme<sup>7</sup>. The majority of this investment will be directed towards the group water sector, but provision is also made for investment in smaller public water and sewerage schemes, which will enable Water Services Authorities to address the investment requirements identified in River Basin Management Plans for smaller wastewater plants and networks. Experience of pilot integrated constructed wetlands has demonstrated the possible benefits of this approach in smaller locations. Building on the experience of these pilots, the Department will be issuing guidance to Water Services Authorities and other developers on integrated constructed wetlands later this year and this will allow for the targeting of funding for such schemes in future Rural Water Programmes.

### **Climate change**

While investment in water services is a key aspect of protecting and preserving our water resources as part of our environmental policy, there are wider environmental objectives which need to be taken into account in planning this investment. For example, Sustainable Energy Ireland estimate that the water services sector uses approximately 350 billion units of electricity and is responsible for the emissions of 180,000 tonnes of CO<sub>2</sub> or approximately 2% of national CO<sub>2</sub> emissions, annually. There is an increasing focus on energy management by local authorities and savings have been achieved through small scale investment in more efficient pumps or from focusing on overall operational costs through the use of the Design, Build and Operate model which has been a feature in many recent treatment plants. The planning of future schemes will need to take appropriate account of best practice in relation to energy efficiency and other issues emerging from ongoing work on the development of national policy on adaptation to the inevitable impacts of climate changes. The adaptation agenda also points to the need for assessment in some locations of the vulnerability of existing infrastructure to flood damage.



*Mullingar Wastewater Treatment Plant*

<sup>7</sup> Separate provision is made for the Contingency Fund for the Remedial Action List referred to on page 9

## **Programme Implementation**

The Programme outlined in this document will be progressed in partnership with the 34 Water Services Authorities. The Department has worked with the County and City Managers Association in recent years to streamline approval processes and allow for greater delegation in relation to smaller schemes to local authorities, consistent with the involvement of the Department at key stages in order to comply with the Department of Finance's Capital Appraisal Guidelines and the Department's obligations relating to management and oversight of Exchequer expenditure. Inclusion of a contract or scheme in WSIP 2010-2012 does not obviate the necessity of Departmental approval, where required, to progress contracts or schemes through key stages of development.

The Department is currently undertaking a Value for Money Study of the Water Services Investment Programme which is reviewing the efficiency and effectiveness of the Programme investment and delivery, including delivery structures. The outcome of this study will inform the delivery of the WSIP 2010-2012.

The investment in infrastructure is only part of the process of meeting objectives in the water sector. Continuous improvement in operational practice remains an important goal. To support this process, the Department and Water Services Authorities have worked through the Water Services Training Group to provide the requisite training for operational staff. To ensure that training and development of staff working on operations and in delivering on the Programme is appropriately prioritised, the Department is providing dedicated funding of €1.5 million to the Water Services Training Group in 2010 which will be available for training of Water Services Authority staff on courses relating to the Programme management and water conservation as well as operational aspects of water and wastewater treatment.

In addition to the extensive Exchequer funding being provided for the delivery of water services infrastructure, a comprehensive regulatory framework is in place to monitor both the quality of drinking water supplies and discharges from wastewater treatment plants. The European Communities (Drinking Water) (No.2) Regulations 2007 prescribe quality standards to be applied and the supervision and enforcement procedures in relation to drinking water. The EPA is responsible for the supervision of public water supplies while local authorities are responsible for the supervision of all other water supplies within their functional area. Drinking water quality data is compiled and published by the EPA annually.

The Waste Water Discharge (Authorisation) Regulations 2007 provide an authorisation system for all local authority wastewater discharges. The EPA is responsible for assessing the license applications and granting authorisations setting out specific conditions to prevent water pollution. The EPA is also required to report on the quality of effluents being discharged from treatment plants, sewers or drainage pipes that are controlled or used by local authorities. The results of this monitoring are published by the EPA bi-annually.

## **Annual Review**

Given the complexities and the timescale necessarily involved in planning major infrastructural investment, a multi-annual approach is taken to the Water Services Investment Programme. During the life of any Programme issues will arise in relation to particular water supplies or wastewater discharges, which may require an urgent or more flexible response. The licensing and certification process for wastewater discharges being rolled out by the EPA, will, for example, clarify the appropriate treatment for many smaller agglomerations and the scope of any investment required. Similarly, the ongoing monitoring of drinking water standards can highlight risks which need to be addressed. For this reason, the Department will review progress the end of each year of operation of the rolling Programme, to allow for any re-prioritisation required for the balance of the Programme.



River Basin Districts Ireland

# Part 2

## Water Services Investment Programme – Details of Contracts and Schemes by River Basin District

### Introduction

The transposition of the Water Framework Directive in 2003 strengthened the catchment based approach to water management with the establishment of eight River Basin Districts on the island of Ireland and provides the basis for a more coordinated delivery of water services. River Basin Management Plans are being finalised for each of these Districts which will aim to protect and improve the water environment.

The Water Services Investment Programme 2010 – 2012 sets out, for each of the River Basin Districts, the water services contracts currently in progress<sup>8</sup>, the contracts to be progressed to construction and the schemes on which planning work will continue over the three year period, as follows:

Eastern River Basin District	Page 18
Neagh/Bann International River Basin District	Page 25
North Western International River Basin District	Page 28
Shannon International River Basin District	Page 31
South Eastern River Basin District	Page 38
South Western River Basin District	Page 45
Western River Basin District	Page 50

It should be noted that the River Basin Districts vary considerably in size, both in terms of the geographical spread and the populations living within the District, and also in the scale and range of challenges identified in the River Basin Management Plans. There are, therefore, variations in the level of investment required in each District. There will also be variations between the level of investment in counties or towns of similar sizes depending on the extent to which they have already benefited from water and wastewater investment over the past decade.

Some Water Service Authorities have areas within a number of River Basin Districts. The relevant contract or scheme to be advanced by that authority will appear in the river basin where the discharge occurs in the case of a wastewater investment and in the river basin where the abstraction of water arises in the case of water supply investment. Where water conservation plans are county wide rather than specific to a precise location within a River Basin District, the contract or scheme is included in the River Basin District which includes the greater geographical area of that county.

The estimated cost of contracts currently in progress and anticipated to start over the three year period are shown. It should be noted, however, that these costs are estimates that are subject to fluctuation in the light of actual tender bids and agreement on final accounts in due course. Costs are not shown in respect of schemes going through planning stages as cost estimates would be premature.

---

<sup>8</sup> While the Serviced Land Initiative was discontinued in 2009 in the light of the developments in the economy and the housing market, the Water Services Investment Programme 2010-2012 includes both contracts still in progress under the Serviced Land Initiative, and a number of contracts which have been approved to commence over the coming years, largely arising from contractual commitments.

# Eastern River Basin District



The Eastern River Basin District has a land area of around 6,300 km<sup>2</sup>, including 350 km<sup>2</sup> of marine waters. The District incorporates all or part of twelve local authority areas: Dublin City, Meath, Kildare, Wicklow, Cavan, Dun Laoghaire- Rathdown, Fingal, Offaly, South Dublin, Westmeath and small parts of Wexford and Louth. Dublin City and towns in the Dublin, Meath, Kildare and Wicklow local authorities all fall within the Greater Dublin Area, as described in the National Spatial Strategy.

Contracts in progress in the District at the end of 2009, together with those contracts prioritised to start and schemes on which planning works will continue over the 2010 – 2012 period are outlined below. The progression of contracts to start and schemes to advance through planning in the district is dependent on compliance with statutory requirements and on the scope of contracts or schemes, as appropriate, fitting within the overall approach and criteria for advancement of water services infrastructure, as outlined in the Programme.

## CONTRACTS AT CONSTRUCTION

Scheme Name	Contract Name	W/S	Estimated Cost €
<b>Dublin City</b>			
Ballymore Eustace Water Treatment Plant Phase 3	· Contract 1 (Civil Works)	W	65,535,000
Ringsend Wastewater Treatment Plant Extension	· Contract 2 (M&E Works)	W	21,698,000
Water Conservation Stage 3	· Sludge Treatment Plant Works	S	21,245,000
	· Dublin Region Watermains Rehabilitation Project (Dublin City) Tranche 1	W	26,642,000
<b>Dun Laoghaire/Rathdown</b>			
Bray Shanganagh Scheme	· Contract 1 (Wastewater Treatment Plant - DBO)	S	80,337,000
Sandyford High Level Water Supply Scheme	· Contract 1 (Civil Works)	W	16,244,000
	· Contract 2 (M&E Works)	W	1,761,000
<b>Fingal</b>			
Dublin Bay Sewerage Scheme	· Contract 5 (1b - Civil Works)	S	4,451,000
Leixlip/Ballycoolen Water Supply Scheme Phase 1	· Contract 1 (Network)	W	28,660,000
Swords North Water Supply	· Contract 1 Network (Lissenhall to Jordanstown)	W	9,915,000
<b>Kildare</b>			
Lower Liffey Valley Sewerage Scheme	· Contract 3A (Sewer & Pumping Stations)	S	8,454,000
	· Contract 3C (Network)	S	1,938,000
Water Conservation Stages 1 & 2 Works	· Water Conservation Stages 1 & 2 Works	W	1,561,000
<b>Louth</b>			
Drogheda Water Supply Scheme	· Staleen Water Treatment Plant Emergency Works (Stage 1)	W	387,000
<b>Meath</b>			
Ashbourne/Ratoath/Kilbride Sewerage Scheme	· Contract 3 (Civil Works)	S	10,118,000
	· Contract 4 (M&E Works)	S	3,876,000
Dunshaughlin Water Supply Scheme	· Contract 3 (Civil Works)	W	11,156,000

	· Contract 4 (M&E Works)	W	3,749,000
	· Network (M3 Interface Works)	W	1,060,000
Meath Grouped Towns & Villages Sewerage Scheme <sup>1</sup>	· Contract 2 (Wastewater Treatment Plant - DBO)	S	30,801,000
	· Contract 3 (Networks)	S	10,245,000
	· Contract 4 (Networks)	S	13,306,000
Navan Mid-Meath Water Supply Scheme	· Contract 2 (Network & Reservoirs - Carn Hill)	W	13,741,000
	· Contract 3 (Network - Southern Ring)	W	6,373,000
	· Network (M3 Interface Works)	W	2,684,000
	· Networks (Civil Works - N51)	W	1,297,000
<b>Offaly</b>			
Edenderry Sewerage Scheme	· Contract 1 Sewers & Watermains	S	1,876,000
<b>South Dublin</b>			
Boherboy Water Supply Scheme	· Contract 2 (Civil Works)	W	34,553,000
	· Contract 3 (M&E Works)	W	1,152,000
Lucan Sewerage Scheme (SLI)	· Civil Works (Tobermaclugg Stream Upgrade)	S	7,711,000
<b>Wicklow</b>			
Arklow Water Supply Scheme Phase 3	· Contract 1A (Wellfield Development)	W	1,942,000
	· Contract 1B (Woodenbridge Collection Main)	W	751,000
	· Contract 1C (Woodenbridge Pumping Station)	W	745,000
West Wicklow Water Supply Scheme Phase 1	· Contract 2 (M&E Works - Blessington)	W	1,380,000
Wicklow Sewerage Scheme	· Wastewater Treatment Plant - DBO	S	24,409,000
Wicklow Town Water Supply Scheme	· Contract 3 (Network - Port Access and Town Relief Road)	W	5,887,000
<b>TOTAL</b>			<b>477,640,000</b>

<sup>1</sup> Athboy, Donore, Duleek, Kilmainhamwood, Moynalty, Rathcairn, Rathmolyon and Summerhill

## CONTRACTS TO START 2010 – 2012

Scheme Name	Contract Name	W/S	Estimated Cost €
<b>Dublin City</b>			
North City Water Supply Scheme Phases 1 & 2	· Network (Arterial Watermain)	W	6,900,000
North Docklands Sewerage Scheme	· Contract 1 (Spencer Dock Pumping Station)	S	6,430,000
	· Contract 2 (Spencer Dock to Ringsend Rising Main)	S	3,619,000
	· Contract 3 (River Liffey Services)	S	3,708,000
	· Contract 4 (Network Upgrade)	S	9,463,000

Ringsend Main Lift Pumping Station	· Contract 2 (M&E Works - Pumping Station Upgrade)	S	4,200,000
	· Wastewater Treatment Plant Upgrade	S	74,000,000
Water Conservation Stage 3 Works	· Dublin Region Watermains Rehabilitation Project (Dublin City) Tranche 2	W	12,795,000

### Dun Laoghaire/Rathdown

Dun Laoghaire Sewerage Scheme Phase 1	· Contract 1 Civil Works (Carysfort - Maretimo Stream)	S	5,900,000
	· Contract 2 (Network Upgrade - Sandyford/Stillorgan Improvements)	S	5,000,000
	· Contract 3 (Network Upgrade - Glashule Environs)	S	200,000
Shanganagh/Bray Sewerage Scheme	· Contract 2 (Network - Bray to Shanganagh)	S	6,900,000
Water Conservation Stage 3 Works	· Dublin Region Watermains Rehabilitation Project (Dun Laoghaire - Rathdown) Tranches 2 & 3	W	20,899,000

### Fingal

Balbriggan Water Supply Scheme Phase 1 (SLI)	· Network & Reservoir (High Level)	W	4,900,000
GDRDP: Blanchardstown Sewerage Scheme	· Contract 1 (Network)	S	2,300,000
	· Contract 9 (Network)	S	320,000
	· Mulhuddart Bridge Works	S	500,000
Leixlip Water Treatment Plant	· Water Treatment Plant - DB	W	30,000,000
Malahide Water Supply Scheme (SLI)	· Civil Works (Malahide Reservoir)	W	3,590,000
Portrane/Donabate/Rush/Lusk	· Wastewater Treatment Plant - DBO Sewerage Scheme	S	30,600,000
Water Conservation Stage 3 Works	· Dublin Region Watermains Rehabilitation Project (Fingal) Tranche 2	W	6,465,000
	· Watermain Replacement (Cottrelstown - Oldtown)	W	720,000
	· Watermain Replacement (Kilshane - Glebe)	W	2,000,000
	· Watermain Rehabilitation (Swords)	W	6,000,000

### Kildare

Athy Sewerage Scheme	· Network Upgrade	S	500,000
Ballymore Eustace Sewerage Scheme (SLI)	· Wastewater Treatment Plant	S	3,545,000
Barrow Abstraction Scheme	· Contract 1 (Wastewater Treatment Plant - DBO)	W	25,500,000
	· Contract 4 (Bagenalstown Lock Upgrade)	W	1,447,000
	· Contract 2 (Network)	W	18,000,000
	· Contract 3A (Network)	W	11,000,000
Kildare Sewerage Scheme	· Network	S	4,000,000
	· Wastewater Treatment Plant - DBO	S	24,000,000
Lower Liffey Vallley Sewerage Scheme	· Wastewater Treatment Plant Upgrade	S	17,500,000

Upper Liffey Valley Sewerage Scheme Phase 3	· Contract 2A (Network)	S	13,000,000
	· Contract 2B (Network)	S	17,000,000
	· Osberstown Wastewater Treatment Plant Upgrade	S	22,000,000
Water Conservation Stage 3 Works	· Dublin Region Watermains Rehabilitation Project (Kildare) Tranche 3 W		556,000
	· Non Regional Water Conservation Works Phase 1	W	2,000,000

**Louth**

Drogheda Water Supply Scheme	· Staleen Water Treatment Plant Emergency Works (Stage 2)	W	1,800,000
	· Network	S	3,000,000

**Meath**

Ashbourne/Ratoath Sewerage Scheme Kells/Oldcastle Water Supply Scheme Water Conservation Stage 3 Works	· Contract 5 (Network)	S	3,500,000
	· Water Treatment Plant Upgrade	W	3,000,000
	· Watermains Rehabilitation Project Phase 1	W	11,600,000

**Offaly**

Edenderry Sewerage Scheme	· Contract 1 (Network)	S	9,600,000
	· Contract 2 (Wastewater Treatment Plant Upgrade)	S	5,000,000

**South Dublin**

Water Conservation Stage 3 Works	· Dublin Region Watermains Rehabilitation Project (South Dublin) Tranche 2	W	5,973,000
----------------------------------	--	---	-----------

**Wicklow**

Arklow Sewerage Scheme	· Network (Northern & Southern Interceptors)	S	5,250,000
	· Network (South Green & Harbour Road)	S	2,250,000
	· Wastewater Treatment Plant - DBO	S	23,500,000
Arklow Water Supply Scheme	· Advance Works (Ballyduff Treatment Plant & Lamberton Pumps)	W	850,000
	· Water Treatment Plant - DBO	W	12,500,000
Greystones Sewerage Scheme (SLI)	· Wastewater Treatment Plant - DBO	S	5,000,000
Newtownmountkennedy Sewerage Scheme	· Network (Garden Village)	S	400,000
	· Network (Kilpeddar)	S	800,000
	· Network & Outfall	S	5,750,000
Water Conservation Stage 3 Works	· Wastewater Treatment Plant Upgrade	S	11,000,000
	· Dublin Region Watermains Rehabilitation Project (Wicklow) Tranche 2	W	1,646,000
	· Watermains Rehabilitation Project Phase 1	W	19,000,000

Wicklow Water Supply Scheme (SLI)	· Network (Ashtown)	W	5,100,000
-----------------------------------	---------------------	---	-----------

**TOTAL****543,976,000**

## SCHEMES AT PLANNING STAGES 2010 - 2012

Scheme Name	W/S
<b>Dublin City</b>	
Dublin City Water Supply Scheme (Ballyboden Water Treatment Plant)	W
Dublin City Water Supply Scheme (Ballymore Eustace Water Treatment Plant - Sludge Treatment)	W
Dublin City Water Supply Scheme (Dargle Valley Water Supply)	W
Dublin City Water Supply Scheme (Filter Outlet Wells and Turbidity Meters - Vartry)	W
Dublin City Water Supply Scheme (North City Phase 3)	W
Dublin City Water Supply Scheme (Saggart Reservoir)	W
Dublin City Water Supply Scheme (Stillorgan Reservoir)	W
Dublin City Water Supply Scheme (Vartry Reservoir - draw-off pipework)	W
Dublin City Water Supply Scheme (Vartry Tunnel Replacement)	W
Dublin Water Supply Scheme (Long Term Water Source) Phase 1	W
GDRDP: City Centre Sewerage Scheme	S
GDRDP: Grand Canal Surface Water Outfall	S
GDRDP: North Dublin Drainage Scheme - Catchment 12 Study	S
GDRDP: Rathmines & Pembroke Sewerage Scheme	S
Grand Canal Water & Drainage Study	W
Poolbeg Water & Sewerage Study	W
Water Conservation Stage 3 Works	W
<b>Dun Laoghaire/Rathdown</b>	
Bray/Shanganagh Sewerage Scheme	S
Dodder Valley (Dun Laoghaire/Rathdown) Sewerage Scheme	S
Dun Laoghaire Sewerage Scheme Phase II	S
Old Connaught/Woodbrook Sewerage Scheme	S
Old Connaught/Woodbrook Water & Sewerage Scheme	W
Water Conservation Stage 3 Works	W
<b>Fingal</b>	
Balbriggan/Skerries Sewerage Scheme Phase 2	S
Balbriggan Water Supply Scheme Phase 2	W
Ballycoolen Trunk Main (Ballycoolen/Kingstown)	W
GDRDP: Blanchardstown Sewerage Scheme Phase 2	S
GDRDP: North Dublin Treatment Plant	S
Malahide Sewerage Scheme	S
Portmarnock Sewerage Scheme	S
Portrane/Donabate/Rush/Lusk Sewerage Scheme	S
Swords Sewerage Scheme (Treatment Plant Upgrade)	S
Water Conservation Stage 3 Works	W

### **Kildare**

Kildare Water Supply Scheme Phase 2 (Castlewarden/Ballygoran )	W
Water Conservation Stage 3 Works	W

### **Meath**

Kells Sewerage Scheme	S
Navan Mid Meath Water Supply Scheme	W
Water Conservation Stage 3 Works	W

### **South Dublin**

GDRDP: South Dublin Sewer Scheme 9B	S
GDRDP: Dodder Valley Sewerage Scheme	S
Saggart/Rathcoole/Newcastle Sewerage Scheme	S
Water Conservation Stage 3 Works	W

### **Wicklow**

Aughrim & Rathdrum Sewerage Scheme	W
Water Conservation Stage 3 Works	W

### **Notes:**

- 1.** All contracts and schemes in Dublin City, Dun Laoghaire/Rathdown, Fingal, South Dublin, Meath, Kildare and Wicklow fall within the Greater Dublin Area as described in the National Spatial Strategy.
- 2.** **S** refers to wastewater infrastructure  
**SLI** refers only to contracts approved to commence in the period 2010-2012 under the Serviced Land Initiative, largely arising from contractual commitments, as this initiative is otherwise discontinued.  
**W** refers to water supply or water conservation

# Neagh/Bann International River Basin District



The Neagh/Bann International River Basin District has a land area of 8,085 km<sup>2</sup>, including its marine waters. The District is mostly located in Northern Ireland but also incorporates part of four local authority areas: Louth and Monaghan and small parts of Meath and Cavan. The District includes the gateway town of Dundalk and the hub town of Monaghan, as described in the National Spatial Strategy.

Contracts in progress in the District at the end of 2009, together with those contracts prioritised to start and schemes on which planning works will continue over the 2010 – 2012 period are outlined below. The progression of contracts to start and schemes to advance through planning in the district is dependent on compliance with statutory requirements and on the scope of contracts or schemes, as appropriate, fitting within the overall approach and criteria for advancement of water services infrastructure, as outlined in the Programme.

## CONTRACTS AT CONSTRUCTION

Scheme Name	Contract Name	W/S	Estimated Cost €
<b>Louth</b>			
Tallanstown Sewerage Scheme (SLI)	• Wastewater Treatment Plant	S	908,000
Water Conservation Stages 1 & 2 Works	• Water Conservation Stages 1 & 2 WorksW		5,354,000
<b>Monaghan</b>			
Carrickmacross Sewerage Scheme	• Contract 2 (Network)	S	15,140,000
Water Conservation Stages 1 & 2 Works	• Water Conservation Stages 1 & 2 Works W		3,992,000
<b>TOTAL</b>			<b>25,394,000</b>

## CONTRACTS TO START 2010 - 2012

Scheme Name	Contract Name	W/S	Estimated Cost €
<b>Louth</b>			
Ardee Sewerage Scheme	• Wastewater Treatment Plant Upgrade	S	3,000,000
Cooley Regional Water Supply Scheme	• Network (Omeath)	W	3,178,000
Dundalk & Drogheda Wastewater Treatment Plants (G)	• Wastewater Treatment Plant Upgrades (Nutrient Removal)	S	750,000
Dundalk South & East Sewerage Scheme (G/SLI)	• Network		
		S	1,664,000
Dundalk Water Supply Scheme (G)	• Water Treatment Plant Upgrade	W	4,050,000
Water Conservation Stage 3 Works	• Watermains Rehabilitation Project Phase 1	W	13,600,000
<b>Monaghan</b>			
Carrickmacross Sewerage Scheme	• Contract 3 (Treatment Plant Upgrade & Outfall)	S	5,500,000
Carrickmacross Water Supply Scheme	• Water Treatment Plant - DBO	W	5,500,000
Castleblaney Sewerage Scheme Phase 1	• Wastewater Treatment Plant Upgrade	S	3,927,000
Lough Egish Regional Water Supply Scheme	• Contract 2 (Water Treatment Plant Upgrade)	W	1,300,000
Monaghan Town Sewerage Scheme (H)	• Contract 2 (Network)	S	3,910,000
Water Conservation Stage 3 Works	• Watermains Rehabilitation Project Phase 1	W	2,500,000
<b>TOTAL</b>			<b>48,879,000</b>

## SCHEMES AT PLANNING STAGES 2010 - 2012

Scheme Name	W/S
<b>Louth</b>	
Dundalk Sewerage Scheme Study (G)	S
Mid-Louth Dunleer Regional Water Supply Scheme	W
Water Conservation Stage 3 Works	W
<b>Monaghan</b>	
Water Conservation Stage 3 Works	W

**Notes:**

- H** refers to a Hub as designated in the National Spatial Strategy
- G** refers to a Gateway as designated in the National Spatial Strategy (Towns in the Dublin local authorities and in Counties Meath, Kildare and Wicklow all fall within the Greater Dublin Area as designated in the National Spatial Strategy)
- S** refers to wastewater infrastructure
- SLI** refers only to contracts approved to commence in the period 2010-2012 under the Serviced Land Initiative, largely arising from contractual commitments, as this initiative is otherwise discontinued.
- W** refers to water supply or water conservation

# North Western International River Basin District



The North Western International River Basin District has a land area of 12,300 km<sup>2</sup>, including 2,500 km<sup>2</sup> of marine waters. The District comprises the western side of Northern Ireland and incorporates all or part of five local authority areas: Donegal, Cavan, Monaghan, Leitrim and a small part of Longford. The District includes the gateway town of Letterkenny and the hub town of Cavan, as described in the National Spatial Strategy.

Contracts in progress in the District at the end of 2009, together with those contracts prioritised to start and schemes on which planning works will continue over the 2010 – 2012 period are outlined below. The progression of contracts to start and schemes to advance through planning in the district is dependent on compliance with statutory requirements and on the scope of contracts or schemes, as appropriate, fitting within the overall approach and criteria for advancement of water services infrastructure, as outlined in the Programme.

## CONTRACTS AT CONSTRUCTION

Scheme Name	Contract Name	W/S	Estimated Cost €
<b>Cavan</b>			
Cavan & Cootehill Regional Water Supply Scheme Phase 2 (H)	• Contract 1 (Civil Works)	W	8,318,000
Water Conservation Stage 3 Works	• Arvagh Rehabilitation Works	W	1,128,000
<b>Donegal</b>			
Laghey Sewerage Scheme	• Main Pumping Station, Collection System and Rising Main	S	806,000
Lough Mourne/Letterkenny Water Supply Scheme (G)	• Contract 4 (Network - Meencrumlin)	W	9,501,000
Water Conservation Stages 1 & 2 Works	• Water Conservation Stages 1 & 2 Works	W	6,048,000
<b>TOTAL</b>			<b>25,801,000</b>

## CONTRACTS TO START 2010 - 2012

Scheme Name	Contract Name	W/S	Estimated Cost €
<b>Cavan</b>			
Ballyconnell Water Supply Scheme	• Water Treatment Plant Upgrade	W	1,800,000
Belturbet Water Supply Scheme	• Water Treatment Plant Upgrade	W	1,500,000
Cavan Regional Water Supply Scheme Phase II (H)	• Water Treatment Plant Upgrade	W	2,000,000
Cavan Sewerage Scheme (H)	• Wastewater Treatment Plant Upgrade	S	6,000,000
Cootehill Water Supply Scheme	• Water Treatment Plant Upgrade	W	1,500,000
Kingscourt Water Supply Scheme	• Water Treatment Plant Upgrade	W	2,000,000
Water Conservation Stage 3 Works	• Watermains Rehabilitation Project Phase 1	W	6,480,000
<b>Donegal</b>			
Ballybofey/Stranorlar Sewerage Schemes	• Network	S	150,000
Ballyshannon / Rossnowlagh Regional Water Supply Scheme	• Water Treatment Plant - DBO	W	6,000,000
Bridgend Sewerage Scheme (G/SLI)	• Wastewater Treatment Plant & Network	S	500,000
Donegal (Group B) Sewerage Schemes <sup>1</sup>	• Wastewater Treatment Plants - DBO	S	25,000,000
Donegal (Group B) Sewerage Schemes <sup>1</sup>	• Networks	S	5,000,000

Donegal Town Sewerage Scheme (SLI)	• Network (Brookfield)	S	103,000
Glenties/Dungloe Sewerage Schemes	• Wastewater Treatment Plants - DBO	S	7,000,000
Gweedore Sewerage Scheme	• Network	S	8,500,000
Gweedore Sewerage Scheme	• Wastewater Treatment Plant	S	2,900,000
Killybegs Sewerage Scheme	• Contract 2 (Main Pumping Station & Outfall)	S	16,500,000
Letterkenny Sewerage Scheme (G)	• Wastewater Treatment Plant - DBO	S	25,000,000
Water Conservation Stage 3 Works	• Watermains Rehabilitation Project Phase 1	W	3,100,000

**TOTAL**

**121,033,000**

<sup>1</sup> Bundoran, Killybegs, Convoy and Glencolumbcille

## SCHEMES AT PLANNING STAGES 2010 - 2012

Scheme Name	W/S
-------------	-----

**Cavan**

Cavan Regional Water Supply Scheme Phase 2 (H)	W
Water Conservation Stage 3 Works	W

**Donegal**

Cranford Regional Water Supply Scheme	W
Falcarragh Sewerage Scheme	S
Gortahork / Falcarragh Water Supply Scheme	W
Inishowen Regional Water Supply Scheme	W
Inishowen Sludge Management / Buncrana Sewerage Scheme	S
Letterkenny Sewerage Scheme (Network) (G)	S
Lough Mourne / Letterkenny Regional Water Supply Scheme (G)	W
Moville / Greencastle Sewerage Scheme	S
Towns & Villages Sewerage Scheme (Bundle 1) <sup>1</sup>	S
West Donegal Regional Water Supply Schemes (including Lettermacaward)	W
Water Conservation Stage 3 Works	W

<sup>1</sup> Buncrana, Carrigart, Kilmacrennan, Milford, Mountcharles, Rathmullen, Ramelton

**Notes:**

- H** refers to a Hub as designated in the National Spatial Strategy
- G** refers to a Gateway as designated in the National Spatial Strategy (Towns in the Dublin local authorities and in Counties Meath, Kildare and Wicklow all fall within the Greater Dublin Area as designated in the National Spatial Strategy)
- S** refers to wastewater infrastructure
- SLI** refers only to contracts approved to commence in the period 2010-2012 under the Serviced Land Initiative, largely arising from contractual commitments, as this initiative is otherwise discontinued.
- W** refers to water supply or water conservation

# Shannon International River Basin District



The Shannon International River Basin District is the largest in Ireland with a land area of 18,000 km<sup>2</sup>, including its marine waters. The District stretches from the Cuilcagh mountains in counties Cavan and Fermanagh (Northern Ireland) to the tip of the Dingle Peninsula in County Kerry. The District incorporates all or part of eighteen local authority areas: Limerick City and County, Clare, North Tipperary, Offaly, Westmeath, Longford, Roscommon, Kerry, Galway, Leitrim, Cavan and small parts of Sligo, South Tipperary, Mayo, Cork, Laois and Meath. The District includes the Gateway City of Limerick as well as the Gateway towns of Tullamore, Athlone and Mullingar and the Hub towns of Ennis and Tralee, as described in the National Spatial Strategy.

Contracts in progress in the District at the end of 2009, together with those contracts prioritised to start and schemes on which planning works will continue over the 2010 – 2012 period are outlined below. The progression of contracts to start and schemes to advance through planning in the district is dependent on compliance with statutory requirements and on the scope of contracts or schemes, as appropriate, fitting within the overall approach and criteria for advancement of water services infrastructure, as outlined in the Programme.

## CONTRACTS AT CONSTRUCTION

Scheme Name	Contract Name	W/S	Estimated Cost €
<b>Clare</b>			
Corofin Sewerage Scheme	• Contract 1 (Civil Works)	S	2,849,000
	• Contract 2 (Wastewater Treatment Plant - DBO)	S	2,410,000
Lisdoonvarna Water Supply Phase 2 (ext. to Ballyvaughan)	• Contract 1 (Civil Works)	W	4,236,000
	• Contract 2 (M&E Works)	W	918,000
Quilty, Scarriff & Feakle Sewerage Scheme	• Contract 1 (Network)	S	8,806,000
	• Contract 2 (Wastewater Treatment Plant - DBO)	S	5,443,000
Water Conservation Stages 1 & 2 Works	• Water Conservation Stages 1 & 2 Works	W	4,889,000
<b>Leitrim</b>			
Carrick-on-Shannon Sewerage Scheme	• Contract 3C (Network)	S	1,673,000
	• Contract 4 (Wastewater Treatment Plant - DBO)	S	8,594,000
Leitrim Towns & Villages Sewerage Scheme <sup>1</sup>	• Contract 2 (Wastewater Treatment Plants - DBO)	S	12,197,000
South Leitrim Regional Water Supply Scheme Phase 5	• Contract 2 (Network)	W	883,000
	• Water Conservation Stages 1 & 2 Works	W	1,500,000
<b>Limerick City</b>			
Clareville Water Treatment Plant (G)	• Water Treatment Plant - DBO	W	32,855,000
Water Conservation Stages 1 & 2 Works (G)	• Water Conservation Stages 1 & 2 Works	W	4,435,000
<b>Longford</b>			
Longford - 5 Villages Sewerage Scheme <sup>2</sup>	• Contract 1 (Networks - Ardagh, Aghnacliffe & Ballinalee)	S	2,405,000
Longford Central Regional Water Supply Scheme	• Contract 2 (Network & Reservoir)	W	11,552,000
<b>Meath</b>			
Oldcastle Sewerage Scheme (GDA)	• Contract 1 (Network)	S	1,192,000
<b>North Tipperary</b>			
Water Conservation Stages 1 & 2 Works	• Water Conservation Stages 1 & 2 Works	W	4,458,000

**Offaly**

Water Conservation Stages 1 & 2 Works	· Water Conservation Stages 1 & 2 Works W	3,123,000
---------------------------------------	---	-----------

**Roscommon**

Arigna, Boyle/Ardcarne Phase 2, Roscommon Central and South Roscommon Regional Water Supply Scheme	· Contract CN I.1 (Network) W	9,289,000
Roscommon Towns & Villages Sewerage Scheme <sup>3</sup>	· Networks W	10,440,000
Water Conservation Stages 1 & 2 Works	· Water Conservation Stages 1 & 2 Works W	2,652,000

**Westmeath**

Glasson/Ballykeeran/Coosan Sewerage Scheme Phase 1	· Civil Works Contract S	5,366,000
	· M&E Contract S	1,203,000
Mullingar Sewerage Scheme (G)	· Contract 1 (Wastewater Treatment Plant - DBO) S	33,791,000
	· Contract 2 (Network) S	22,321,000

**TOTAL****199,480,000**<sup>1</sup>Dromahair, Kinlough, Kiltyclogher, Tullaghan, Drumkeeran, Rooskey, Jamestown, Cloone, Drumcong, Killargue & Ballinaglera<sup>2</sup>Ardagh, Ballinalee, Aughnacliffe, Drumlish & Newtownforbes<sup>3</sup>Arigna, Ballinlough, Ballyleague/Lanesborough, Cootehall, Creagh, Elphin, Frenchpark, Hodson Bay, Knockcroghery, Lisacul, Loughglynn, Strokestown & Tulsk**CONTRACTS TO START 2010 - 2012**

Scheme Name	Contract Name	W/S	Estimated Cost €
-------------	---------------	-----	------------------

**Clare**

Clonlara Sewerage Scheme (SLI)	· Network S	2,418,000
Water Conservation Stage 3 Works	· Watermains Rehabilitation Project Phase 1 W	6,267,000

**Galway County**

Mountbellew Sewerage Scheme	· Wastewater Treatment Plant Upgrade S	3,741,000
-----------------------------	--	-----------

**Kerry**

Ardfert Sewerage Scheme	· Wastewater Treatment Plant Upgrade S	2,650,000
Ballylongford Sewerage Scheme	· Wastewater Treatment Plant Upgrade S	1,200,000
Fenit Sewerage Scheme	· Wastewater Treatment Plant Upgrade S	2,780,000
Tarbert Sewerage Scheme	· Wastewater Treatment Plant Upgrade S	1,200,000

**Leitrim**

Water Conservation Stage 3 Works	· Watermains Rehabilitation Project Phase 1	W	1,100,000
----------------------------------	---	---	-----------

**Limerick City**

Limerick City Water Supply Scheme (G)	· Trunk Main Commissioning and Valving Contract	W	1,000,000
Water Conservation Stage 3 Works (G)	· Watermains Rehabilitation Project Phase 1	W	7,000,000

**Limerick County**

Adare/Patrickswell Water Supply Scheme	· Network (Patrickswell to Adare)	W	2,600,000
Askeaton Sewerage Scheme	· Wastewater Treatment Plant - DBO	S	2,600,000
Dromcollogher Sewerage Scheme	· Contract 1 (Wastewater Treatment Plant - DBO)	S	2,700,000
Dromcollogher Sewerage Scheme	· Contract 2 (Network)	S	2,300,000
Kilmallock Sewerage Scheme	· Wastewater Treatment Plant - DBO	S	3,400,000
Mungret Sewerage Scheme (G)	· Network	S	2,000,000
Patrickswell Sewerage Scheme	· Network	S	4,500,000
Water Conservation Stage 3 Works	· Watermains Rehabilitation Project Phase 1	W	3,086,000

**Longford**

Granard/Ballymahon Rural Water Supply Scheme	· Contract 3 - (Water Treatment Plants Upgrades)	W	3,000,000
	· Contract 4 - (Ballymahon RWSS to Keenagh)	W	4,000,000
Longford Central Regional Water Supply Scheme	· Contract 3 - (Network & Reservoir)	W	7,000,000
	· Contract 4 - (Water Treatment Plant Upgrade - Lough Forbes)	W	2,000,000
Longford Towns & Villages (5) Sewerage Scheme Bundle 1 <sup>1</sup>	· Contract 2 (Wastewater Treatment Plant - DBO)	S	6,000,000
Water Conservation Stage 3 Works	· Watermains Rehabilitation Project Phase 1	W	1,850,000

**Meath**

Oldcastle Sewerage Scheme (GDA)	· Network & Wastewater Treatment Plant Upgrade	S	7,660,000
---------------------------------	--	---	-----------

**North Tipperary**

Newport Regional Water Supply Scheme	· Water Treatment Plant & Network Upgrade	W	6,060,000
Water Conservation Stage 3 Works	· Watermains Rehabilitation Project Phase 1	W	3,500,000

## Offaly

Birr Sewerage Scheme	· Contract 1 (Network and storm tanks)	S	5,750,000
Birr Water Supply Scheme	· Water Treatment Plant Upgrade	W	1,000,000
Tullamore Sewerage Scheme (G)	Contract 1 (Wastewater Treatment Plant - DBO)	S	24,000,000
Tullamore Water Supply Scheme Phase 5 (G)	· Contract 2 (Network)	W	18,100,000
	· Water Treatment Plant Upgrade (Clonaslee)	W	5,800,000
Water Conservation Stage 3 Works	· Watermains Rehabilitation Project Phase 1	W	12,231,000

## Roscommon

Arigna Regional Water Supply Scheme	· Water Treatment Plant Upgrade	W	3,210,000
Boyle/Ardcarne Regional Water Supply Scheme	· Network	W	2,400,000
	· Water Treatment Plant Upgrade (Rockingham Springs)	W	5,150,000
NE Roscommon & Ballyleague Regional Water Supply Schemes	· Networks	W	2,950,000
	· Water Treatment Plants - DBO	W	9,550,000
Roscommon Central Regional Water Supply Scheme	· Water Treatment Plant (Ballinagard Springs)	W	4,470,000
Roscommon Towns & Villages Sewerage Scheme <sup>2</sup>	· Wastewater Treatment Plants - DBO	S	12,537,000
South Roscommon Regional Water Supply Scheme	· Water Treatment Plant Upgrade (Killeglan)	W	4,340,000
Water Conservation Stage 3 Works	· Watermains Rehabilitation Project Phase 1	W	10,500,000
West Roscommon Regional Water Supply Scheme	· Water Treatment Plant Upgrade (Granlahan)	W	1,900,000

## Westmeath

Athlone Sewerage Scheme (G)	· Contract 2 (Network)	S	9,500,000
	· Contract 3 (Network)	S	12,400,000
	· Contract 4 (Network)	S	17,900,000
	· Contract 5 (Wastewater Treatment Plant Upgrade)	S	29,900,000
Kilbeggan Sewerage Scheme Phase 1	· Network and Treatment Plant Upgrade	S	5,480,000
Mullingar Regional Water Supply Scheme (G)	· Lough Ennell Abstraction	W	5,980,000
	· Water Treatment Plant Upgrade (Storage & Intake)	W	3,600,000
Water Conservation Stage 3 Works	· Watermains Rehabilitation Project Phase 1	W	10,200,000

## TOTAL

**312,460,000**

<sup>1</sup>Ardagh, Ballinallee, Aughnaclyffe, Drumlish & Newtownforbes

<sup>2</sup>Arigna, Ballinlough, Ballyleague/Lanesborough, Cootehall, Creagh, Elphin, Frenchpark, Hodson Bay, Knockcroghery, Lisacul, Loughglynn, Strokestown & Tulsk

## SCHEMES AT PLANNING STAGES 2010 - 2012

Scheme Name	W/S
<b>Clare</b>	
Ennis/Clarecastle Sewerage Scheme Phase 1 (Clareabbey & Clonroadmore Wastewater Treatment Plants) (H)	S
Ennis/Clarecastle Sewerage Scheme Phase 2 (H)	S
Kilrush & Kilkee Sewerage Scheme	S
Shannon Sewerage Scheme (G)	S
Water Conservation Stage 3 Works	W
<b>Galway County</b>	
Ballinasloe Sewerage Scheme	S
Ballygar Sewerage Scheme	S
Mountbellew Sewerage Scheme	S
<b>Kerry</b>	
Ardfert Sewerage Scheme	S
Ballylongford Sewerage Scheme	S
Fenit Sewerage Scheme	S
Tarbert Sewerage Scheme	S
<b>Leitrim</b>	
Water Conservation Stage 3 Works	W
<b>Limerick City</b>	
Limerick City Sewerage Scheme Phase 2 (G)	S
Water Conservation Stage 3 Works	W
<b>Limerick County</b>	
Abbeylea Sewerage Scheme (Treatment Plant Upgrade)	S
Castletroy Sewerage Scheme	S
Newcastle West Sewerage Scheme	S
Water Conservation Stage 3 Works	W
<b>Longford</b>	
Lanesborough Regional Water Supply Scheme	W
Longford Sewerage Scheme	S
Water Conservation Stage 3 Works	W
<b>North Tipperary</b>	
Ballina (Tipp NR) Sewerage Scheme	S
Borrisoleigh Sewerage Scheme	S

Nenagh Sewerage Scheme (Treatment Plant Upgrade)	S
Newport Sewerage Scheme	S
Rural Villages Sewerage Scheme Study	S
Templemore Sewerage Scheme (Network)	S
Water Conservation Stage 3 Works	W

### Offaly

Birr Sewerage Scheme	S
Tullamore Sewerage Scheme (Network) (G)	S
Tullamore Water Supply Scheme (G)	W
Water Conservation Stage 3 Works	W

### Roscommon

Mount Talbot / Four Roads Regional Water Supply Scheme	W
Roscommon Town Sewerage Scheme	S
West Roscommon Regional Water Supply Scheme	W
Water Conservation Stage 3 Works	W

### Westmeath

South Westmeath Regional Water Supply Scheme (G)	W
Water Conservation Stage 3 Works	W

### Notes:

- H** refers to a Hub as designated in the National Spatial Strategy
- G** refers to a Gateway as designated in the National Spatial Strategy (Towns in the Dublin local authorities and in Counties Meath, Kildare and Wicklow all fall within the Greater Dublin Area as designated in the National Spatial Strategy)
- GDA** Refers to contracts falling within the Greater Dublin Area as described in the National Spatial Strategy
- S** refers to wastewater infrastructure
- SLI** refers only to contracts approved to commence in the period 2010-2012 under the Serviced Land Initiative, largely arising from contractual commitments, as this initiative is otherwise discontinued.
- W** refers to water supply or water conservation

# South Eastern River Basin District



The South Eastern River Basin District has a land area of 14,000 km<sup>2</sup>, including 1,000 km<sup>2</sup> of marine waters. The District incorporates all or part of thirteen local authority areas: Waterford City and County, Wexford, Wicklow, Carlow, Kilkenny, Kildare, Offaly, Laois, North Tipperary, South Tipperary and a small part of Limerick and Cork. The District includes the Gateway City of Waterford and the Hub cities/towns of Kilkenny and Wexford, as described in the National Spatial Strategy.

Contracts in progress in the District at the end of 2009, together with those contracts prioritised to start and schemes on which planning works will continue over the 2010 – 2012 period are outlined below. The progression of contracts to start and schemes to advance through planning in the district is dependent on compliance with statutory requirements and on the scope of contracts or schemes, as appropriate, fitting within the overall approach and criteria for advancement of water services infrastructure, as outlined in the Programme.

## CONTRACTS AT CONSTRUCTION

Scheme Name	Contract Name	W/S	Estimated Cost €
<b>Carlow</b>			
Water Conservation Stages 1 & 2 Works	• Water Conservation Stages 1 & 2 Works	W	3,458,000
<b>Kilkenny</b>			
Kilmacow Sewerage Scheme	• Contract 2 (Wastewater Treatment Plant - DBO)	S	2,507,000
Mooncoin Regional Water Supply Scheme Phase 1A (SLI)	• Contract 1 (Network)	W	6,888,000
Thomastown Sewerage Scheme (SLI)	• Treatment Plant Upgrade	S	2,061,000
Water Conservation Stages 1 & 2 Works	• Water Conservation Stages 1 & 2 Works	W	4,800,000
<b>Laois</b>			
Mountmellick Sewerage Scheme Phase 1	• Contract 1 (Wastewater Treatment Plant & Pumping Station Upgrade)	S	1,965,000
Water Conservation Stages 1 & 2 Works	• Water Conservation Stages 1 & 2 Works	W	2,200,000
<b>North Tipperary</b>			
Templemore Sewerage Scheme	• Contract 2 (Wastewater Treatment Plant - DBO)	S	4,487,000
<b>South Tipperary</b>			
Sludge Management Scheme	• Wastewater Treatment Plant - DBO	S	5,707,000
Water Conservation Stages 1 & 2 Works	• Water Conservation Stages 1 & 2 Works	W	4,248,000
<b>Waterford City</b>			
Waterford North West City Water Supply Scheme (G)	• Network (Civil Works)	W	8,652,000
Waterford Sewerage Scheme (G)	• Contract 1A (M&E Works)	S	2,474,000
	• Contract 5 (Wastewater Treatment Plant - DBO)	S	34,990,000

**Wexford**

Bunclody Sewerage Scheme	· Wastewater Treatment Plant - DBO	S	4,118,000
Gorey Regional Water Supply Scheme	· Network	W	8,833,000
New Ross Sewerage Scheme	· Wastewater Treatment Plant - DBO	S	13,943,000
	· Network	S	4,137,000
Water Conservation Stages 1 & 2 Works	· Water Conservation Stages 1 & 2 Works	W	5,399,000

**TOTAL**

**120,867,000**

**CONTRACTS TO START 2010 - 2012**

Scheme Name	Contract Name	W/S	Estimated Cost €
-------------	---------------	-----	------------------

**Carlow**

Carlow North Regional Water Supply Scheme	· Water Treatment Plant	W	1,255,000
Carlow Town Drainage Scheme	· Network	S	20,782,000
Kernanstown Sewerage Scheme (SLI)	· Network	S	1,330,000
Tullow/Rathvilly/Hacketstown Sewerage Scheme	· Wastewater Treatment Plant (Hacketstown)	S	600,000
	· Wastewater Treatment Plant (Rathvilly)	S	600,000
	· Network (Tullow)	S	3,000,000
Water Conservation Stage 3 Works	· Watermains Rehabilitation Project Phase 2	W	3,000,000

**Kilkenny**

Bennettsbridge Sewerage Scheme (SLI)	· Wastewater Treatment Plant Upgrade	S	620,000
Castlecomer Sewerage Scheme (SLI)	· Contract 1 (Wastewater Treatment Plant Upgrade)	S	550,000
Kilkenny City Sewerage Scheme (H)	· Wastewater Treatment Plant Upgrade	S	3,060,000
Kilkenny Grouped Villages Sewerage Scheme	· Ballyhale Wastewater Treatment Plant Upgrade	S	360,000
	· Clogh Moneenroe Wastewater Treatment Plant Upgrade	S	3,500,000
	· Fiddown Wastewater Treatment Plant Upgrade	S	360,000
	· Contract 1 (Interim Plant - Freshford/Johnstown/Goresbridge)	S	740,000
	· Inistioge Wastewater Treatment Plant	S	360,000
	· Piltown Wastewater Treatment Plant	S	900,000
	· Stoneyford Wastewater Treatment Plant	S	740,000
	· Urlingford Wastewater Treatment Plant	S	510,000
	· Mullinavat Wastewater Treatment Plant	S	360,000
Kilkenny Grouped Villages Water Supply Scheme	· Johnstown Water Supply - Contract 1	W	341,000
	· Johnstown Water Supply - Contract 2	W	180,000
	· Thomastown Source - Contract 1	W	4,073,000
	· Gowran Goresbridge Paulstown Water Supply - Contract 1 (UV & Filter)	W	174,000

	· Gowran Goresbridge Paulstown Water Supply - Contract 2 (Source)	W	285,000
	· Mooncoin Water Supply - Contract 1 (Clonassy Water Treatment Plant & Network)	W	4,700,000
Kilkenny Sewerage Scheme (SLI)	· Network (Western Environs SLI)	S	4,800,000
Kilkenny Regional Water Supply Scheme (H)	· Contract 1 (Radestown Reservoir)	W	80,000
	· Contract 2 (Wellfields)	W	1,300,000
	· Contract 4 (Outrath Reservoir)	W	500,000
	· Contract 5 (Troyswood Intake)	W	272,000
	· Contract 6 (Dinin Intake)	W	272,000
Water Conservation Stage 3 Works	· Watermains Rehabilitation Project Phases 1 & 2	W	15,000,000

### Laois

Ballinakill Water Supply Scheme	· Source, Reservoir and Network Contract	W	1,800,000
Laois Grouped Towns Sewerage Scheme <sup>1</sup>	· Networks	S	11,600,000
	· Wastewater Treatment Plants - DBO	S	27,000,000
Portarlinton Sewerage Scheme	· Wastewater Treatment Plant Upgrade (Advance Works)	S	308,000
Water Conservation Stage 3 Works	· Watermains Rehabilitation Project Phase 1	W	9,000,000

### North Tipperary

Thurles Regional Water Supply Scheme	· Contract 1 (Network)	W	12,000,000
	· Contract 2 (Wastewater Treatment Plant - DBO)	W	16,000,000

### South Tipperary

Ardfinnan Regional Water Supply Scheme	· M&E Works (Ballylooby)	W	1,100,000
	· Network (Ballylooby)	W	800,000
Burncourt & Fethard Regional Water Supply Scheme	· Water Treatment Plants (Burncourt and Gortnapisha)	W	14,300,000
Clonmel Regional Water Supply Scheme	· Watermain & Borehole Contract	W	1,650,000
Clonmel Town & Rural Water Supply Scheme	· Source protection Works	W	70,000
Grangemockler Sewerage Scheme	· Wastewater Treatment Plant & Network	S	1,100,000
Water Conservation Stage 3 Works	· Watermains Rehabilitation Project Phase 1	W	12,250,000

### Waterford City

East Waterford Water Supply Scheme (G)	· Network (Adamstown to Waterford City)	W	4,500,000
Waterford City Sewerage Scheme (G)	· Sludge Treatment Centre	S	5,500,000
Waterford City Sewerage Scheme Phase II (G)	· Contract 2C (Island View Overflow Upgrade)	S	1,100,000
Water Conservation Stage 3 Works (G)	· Watermains Rehabilitation Project Phase 3	W	6,000,000

## Waterford County

Ardmore Water Supply Scheme	· Source, Reservoir & Network Contract	W	3,257,000
Ballinacourty/Deelish Water Supply Scheme	· Contract 1 (Network)	W	610,000
Ballinroad Sewerage Scheme (SLI)	· Wastewater Treatment Plant	S	1,140,000
Cheekpoint Sewerage Scheme	· Wastewater Treatment Plant - DB	S	2,307,000
Clonea Power Sewerage Scheme	· Contract 2 (Network & Treatment)	S	400,000
Dunmore East Water Supply Scheme	· Reservoir & Network Contract	W	206,000
Ring/Helvick Water Supply Scheme	· Source, Reservoir & Network Contract	W	5,877,000
Water Conservation Stage 3 Works	· Watermains Rehabilitation Project Phases 1 & 2	W	8,873,000
Waterford Grouped Towns & Villages Sewerage Scheme <sup>2</sup>	· Ardmore (Advance Works)	S	798,000
	· Contract 1 (Network - Ardmore)	S	4,497,000
	· Contract 2 (Network - Ballyduff & Kilmeaden)	S	2,765,000
	· Contract 3 (Network - Cappoquin)	S	3,250,000
	· Contract 4 (Network - Dunmore East)	S	9,816,000
	· Contract 6 (Network - Stradbally)	S	1,218,000
	· Contract 8 (Wastewater Treatment Plants - DBO)	S	29,200,000

## Wexford

Bunclody Water Supply Scheme (SLI)	· Contract 1 (Network)	W	1,300,000
Castlebridge Sewerage Scheme (SLI)	· Contract 2 (Network)	S	1,100,000
	· Wastewater Treatment Plant Upgrade	S	2,469,000
Enniscorthy Sewerage Scheme Phase 3	· Contract 1 (Wastewater Treatment Plant Upgrade )	S	9,800,000
	· Contract 2 (Network)	S	9,800,000
Fethard-on-Sea Sewerage Scheme	· Contract 1 - Wastewater Treatment Plant and Network	S	3,200,000
Gorey Regional Water Supply Scheme	· Contract 4 (Wastewater Treatment Plant Upgrade, Reservoir & Pumps)	W	7,700,000
Gorey Sewerage Scheme	· Contract 1 (Wastewater Treatment Plant Upgrade)	S	11,700,000
New Ross Water Supply Scheme	· Contract 1 (Water Treatment Plant Upgrade)	W	1,300,000
Piercetown Sewerage Scheme (SLI)	· Wastewater Treatment Plant	S	1,800,000
Taghmon Sewerage Scheme (SLI)	· Wastewater Treatment Plant	S	4,900,000
Taghmon Water Supply Scheme	· Water Treatment Plant Upgrade	W	2,300,000
Water Conservation Stage 3 Works	· Watermains Rehabilitation Project Phase 1	W	7,120,000

## Wicklow

Dunlavin Sewerage Scheme (GDA)	· Wastewater Treatment Plant Upgrade	S	3,000,000
	· Network	S	3,750,000

## TOTAL

**346,135,000**

<sup>1</sup> Abbeyleix, Rathdowney, Stradbally, Mountrath, Durrow & Clonaslee

<sup>2</sup> Ardmore, Ballyduff, Kilmeaden, Dunmore East, Cappoquin, Kilmacthomas, Stradbally and Tallow

## SCHEMES AT PLANNING STAGES 2010 - 2012

Scheme Name	W/S
<b>Carlow</b>	
Water Conservation Stage 3 Works	W
<b>Kilkenny</b>	
Ballyragget, Clogh/Castlecomer & Urlingford/Johnstown Water Supply Scheme	W
Callan, Graiguenamanagh, Thomastown and Inistioge Water Supply Scheme	W
Freshford/Johnstown/Goresbridge Sewerage Scheme	S
Kilkenny City Sewerage Scheme (Treatment Plant Upgrade) (H)	S
Kilkenny Regional Water Supply Scheme (H)	W
Mooncoin Regional Water Supply Scheme Phase 2	W
Water Conservation Stage 3 Works	W
<b>Laois</b>	
Durrow Water Supply Scheme	W
Grouped Towns Sewerage Scheme <sup>1</sup>	S
Mountmellick Sewerage Scheme - Phases 2 & 3	S
Portarlinton Sewerage Scheme	S
Portarlinton Water Supply Scheme	W
Portlaoise-Mountmellick Water Supply Scheme	W
Water Conservation Stage 3 Works	W
<b>North Tipperary</b>	
Nenagh Sewerage Scheme	S
Roscrea Sewerage Scheme	S
Thurles Sewerage Scheme	S
<b>South Tipperary</b>	
Burncourt & Fethard Regional Water Supply Scheme	W
Clonmel Town & Rural Water Supply Scheme	W
Fethard Sewerage Scheme	S
Mullinahone Sewerage Scheme	S
Water Conservation Stage 3 Works	W
<b>Waterford City</b>	
Water Conservation Stage 3 Works	W
<b>Waterford County</b>	
Ballinacourty Deelish Water Supply Scheme	W
Ballyduff Upper Sewerage Scheme	S
Carrick-on-Suir (Rathgormack) Water Supply Scheme	W
Dungarvan Water Supply Scheme	W

Dunmore East Water Supply Scheme	W
Passage East Sewerage Scheme	S
Tramore Sewerage Scheme Stage 2	S
West Waterford Water Supply Scheme	W
Water Conservation Stage 3 Works	W

### **Wexford**

Enniscorthy and Sow Regional Water Supply Scheme	W
Wexford Sewerage Scheme (H)	S
Wexford Villages Sewerage Scheme <sup>2</sup>	S
Water Conservation Stage 3 Works	W

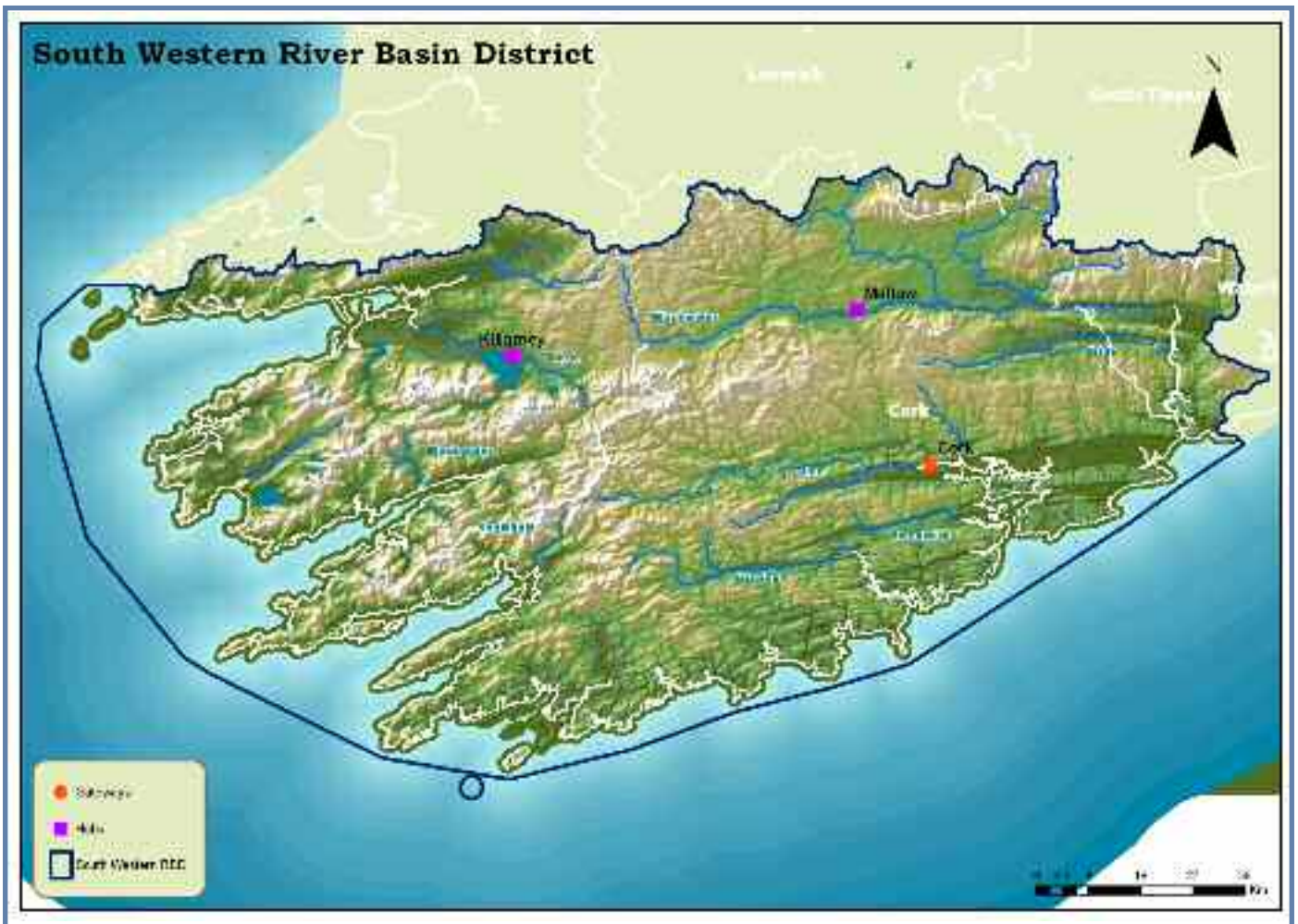
<sup>1</sup> Newtown-Doonane, The Swan, Ballinakill, Errill, Ballyoran

<sup>2</sup> Arthurstown, Ballycanew, Ballyhack, Campile, Clonroche, Duncannon, Wellingtonbridge

### **Notes:**

- H** refers to a Hub as designated in the National Spatial Strategy
- G** refers to a Gateway as designated in the National Spatial Strategy (Towns in the Dublin local authorities and in Counties Meath, Kildare and Wicklow all fall within the Greater Dublin Area as designated in the National Spatial Strategy)
- GDA** Refers to contracts falling within the Greater Dublin Area as described in the National Spatial Strategy
- S** refers to wastewater infrastructure
- SLI** refers only to contracts approved to commence in the period 2010-2012 under the Serviced Land Initiative, largely arising from contractual commitments, as this initiative is otherwise discontinued.
- W** refers to water supply or water conservation

# South Western River Basin District



The South Western River Basin District has a land area of 11,000 km<sup>2</sup> and a further 4,000 km<sup>2</sup> of marine waters. The District incorporates all or part of six local authority areas: Cork City and County, Kerry, Waterford and small parts of South Tipperary and Limerick. The District includes the Gateway City of Cork and the Hub towns of Mallow and Killarney, as described in the National Spatial Strategy.

Contracts in progress in the District at the end of 2009, together with those contracts prioritised to start and schemes on which planning works will continue over the 2010 – 2012 period are outlined below. The progression of contracts to start and schemes to advance through planning in the district is dependent on compliance with statutory requirements and on the scope of contracts or schemes, as appropriate, fitting within the overall approach and criteria for advancement of water services infrastructure, as outlined in the Programme.

## CONTRACTS AT CONSTRUCTION

Scheme Name	Contract Name	W/S	Estimated Cost €
<b>Cork County</b>			
Ballincollig Sewerage Scheme (G)	· Emergency Treatment Plant Upgrade	S	1,500,000
	· Network (Green Route)	S	2,500,000
Bantry Interim Water Supply Scheme	· Civil Works	W	3,411,000
	· M&E Works	W	1,678,000
Bantry Sewerage Scheme	· Network (Civil Works)	S	5,694,000
	· Network (M&E Works)	S	3,378,000
Blarney Water Supply Scheme Phase 1 (SLI)	· Network (Extension to Station Road)	W	216,000
Cloughduv Sewerage Scheme	· Contract 1 (Civil Works)	S	1,480,000
Cloughduv Water Supply Scheme	· Contract 1 (Civil Works)	W	1,650,000
Cobh/Midleton/Carrigtwohill Water Supply Scheme	· Contract 3 (Network)	W	3,144,000
	· Contract 1 (Civil Works)	W	3,252,000
Dripsey/Coachford Water Supply Scheme	· Civil Works	W	6,490,000
	· M&E Works	W	1,160,000
Killeagh Sewerage Scheme	· Contract 1 (Treatment Plant Upgrade)	S	462,000
	· Contract 3 (Network)	S	7,654,000
Kinsale Sewerage Scheme	· Contract 4 (Network)	S	2,260,000
	· Wastewater Treatment Plant - DBO	S	10,289,000
Schull Sewerage Scheme	· Network (Civil Works)	S	2,424,000
	· Network (M&E Works)	S	506,000
Water Conservation Stages 1 & 2 Works	· Water Conservation Stages 1 & 2 Works	W	18,364,000
Watergrasshill Water Supply Scheme	· Contract 1 (Civil Works)	W	3,770,000
<b>Kerry</b>			
Kilcummin/Barraduff Sewerage Scheme	· Barraduff Wastewater Treatment Plant - DBO	S	2,599,000
	· Firies Wastewater Treatment Plant - DBO	S	2,787,000
NSS Hub Cluster Sewerage Scheme	· Milltown Wastewater Treatment Plant - DBO	S	3,496,000
	· Water Conservation Stages 1 & 2 Works	W	2,882,000
<b>TOTAL</b>			<b>93,046,000</b>

## CONTRACTS TO START 2010 - 2012

Scheme Name	Contract Name	W/S	Estimated Cost €
<b>Cork City</b>			
Cork City Water Supply Scheme (G)	• Lee Road Water Treatment Plant Upgrade	W	17,500,000
	• Network (Shanakiel Rising Main)	W	1,900,000
	• Network (Wilton Lee Road Trunk Main)	W	2,900,000
Docklands Water Supply Scheme (G)	• Contract 1 (Network)	W	5,600,000
Water Conservation Stage 3 Works (G)	• Watermains Rehabilitation Project		
	Phase 1	W	12,200,000
<b>Cork County</b>			
Ballincollig Sewerage Scheme (G)	• Wastewater Treatment Plant Upgrade		
	(Advance Works)	S	5,000,000
Baltimore Sewerage Scheme	• Network	S	750,000
Bandon Sewerage Scheme Phase 2	• Network	S	12,000,000
	• Wastewater Treatment Plant Upgrade	S	1,000,000
Bantry Water Supply Scheme Phase 2	• Network	W	1,897,000
Blarney Tower Sewerage Scheme (G)	• Network (Cloghroe)	S	600,000
	• Network (Overflows)	S	5,000,000
Carrigtwohill Sewerage Scheme (SLI)	• Wastewater Treatment Plant Upgrade	S	14,000,000
Castletownbere Regional Water Supply Scheme Phase 1	• Water Treatment Plant, Reservoir &		
	Network	W	6,000,000
Clonakilty Sewerage Scheme	• Wastewater Treatment Plant Upgrade	S	5,000,000
Coachford Sewerage Scheme (SLI)	• Network	S	1,447,000
Conna Regional Water Supply Scheme Phase 1	• Reservoir	W	1,000,000
Courtmacsherry/Timoleague Sewerage Scheme	• Treatment & Network	S	5,000,000
	• Network	S	1,000,000
Crookstown Sewerage Scheme (SLI)	• Wastewater Treatment Plant Upgrade	S	1,400,000
	• Network	S	1,000,000
Dunmanway Regional Water Supply Scheme Phase 1	• Water Treatment Plant Upgrade	W	1,000,000
Dunmanway Regional Water Supply Scheme Phase 2	• Treatment & Network	W	6,760,000
	• Network	S	400,000
Dunmanway Sewerage Scheme	• Network	S	400,000
Inniscarra Water Treatment Plant (G)	• Sludge Treatment Upgrade	W	5,570,000
Innishannon Sewerage Scheme (SLI)	• Wastewater Treatment Plant Upgrade	S	2,000,000
Kinsale Sewerage Scheme	• Storm Tank	S	1,000,000
Leap/Baltimore Water Supply Scheme Phase 1	• Contract 1 (Network)	W	2,200,000
Little Island Sewerage Scheme	• Network	S	600,000
Mallow Sewerage Scheme (H)	• Network	S	5,000,000
	• Wastewater Treatment Plant		
	(Nutrient Reduction)	S	1,000,000
Mallow/Ballyvinter Regional Water Supply Scheme Phase 1 (H)	• Network (Box Cross)	W	4,000,000

Midleton Sewerage Scheme (SLI)	· Wastewater Treatment Plant Upgrade	S	2,288,000
Riverstick Sewerage Scheme	· Wastewater Treatment Plant Upgrade	S	1,200,000
Schull Water Supply Scheme Phase 1	· Treatment Plant & Network	W	5,600,000
Skibbereen Regional Water Supply Scheme Phase 4	· Treatment & Storage	W	2,500,000
Water Conservation Stage 3 Works	· Watermains Rehabilitation Project Phase 1	W	23,213,000
West Cork Grouped DBO Scheme <sup>1</sup>	· Wastewater Treatment Plant - DBO	S	6,950,000
Youghal Sewerage Scheme	· Network	S	8,000,000
	· Wastewater Treatment Plant - DBO	S	10,000,000

### Kerry

Central Regional Water Supply Scheme (H)	· Scart Reservoir	W	5,070,000
	· Water Treatment Plant - DBO	W	22,730,000
Kenmare Sewerage Scheme	· Wastewater Treatment Plant Upgrade	S	9,800,000
Kenmare Water Supply Scheme	· Water Treatment Plant - DBO	W	6,000,000
Water Conservation Stage 3 Works	· Watermains Rehabilitation Project Phase 1	W	18,790,000
Waterville Water & Sewerage Scheme	· Water & Waste Treatment Plants - DBO	S	10,500,000

### Waterford County

Lismore Sewerage Scheme (SLI)	· Wastewater Treatment Plant Upgrade	S	1,140,000
West Waterford Water Supply Scheme Phase 1	· Contract 1 (River Finisk Borehole)	W	525,000

### TOTAL

**265,030,000**

<sup>1</sup>Skibbereen, Schull, Baltimore & Dunmanway

## SCHEMES AT PLANNING STAGES 2010 - 2012

Scheme Name	W/S
-------------	-----

### Cork City

Carrigrennan Wastewater Treatment Plant Upgrade (G)	S
Cork City Water Supply Scheme (Storage Mt Elma, Ballincollig & Chetwynd) (G)	W
Cork City Water Supply Scheme (Storage at Low Intermediate Level) (G)	W
Docklands Sewerage Scheme (G)	S
Water Conservation Stage 3 Works	W

### Cork County

Ballincollig Sewerage Scheme (G)	S
Ballyourney/Ballymakeera Sewerage Scheme (Treatment Plant)	S
Banteer/Dromahane Regional Water Supply Scheme	W
Bantry Sewerage Scheme	S
Bantry Water Supply Scheme	W

Castletownbere Sewerage Scheme	S
Conna Regional Water Supply Scheme	W
Cork City Sewerage Scheme (Tramore River Valley - Study)	S
Cork Lower Harbour Sewerage Scheme	S
Cork North East Water Supply Scheme	W
Cork Sludge Management Scheme (G)	S
Drimoleague Sewerage Scheme	S
Dripsey Sewerage Scheme	S
Dunmanway Regional Water Supply Scheme	W
Fermoy Sewerage Scheme	S
Garrettstown/Ballinspittle Sewerage Scheme	S
Glanmire/Riverstown/Little Island Stormwater Separation Study	S
Leap/Baltimore Water Supply Scheme	W
Mallow/Ballyvinter Regional Water Supply Scheme (H)	W
Millstreet Sewerage Scheme	S
Mitchelstown/North Galtees Water Supply Scheme	W
Mitchelstown Sewerage Scheme	S
Monard New Town - Water Services Study	W/S
Rosscarbery/Owenahincha Sewerage Scheme	S
Saleen Sewerage Scheme	S
Schull Water Supply Scheme	W
Shanagarry/Garryvoe/Ballycotton Sewerage Scheme	S
Shannonvale Sewerage Scheme	S
Skibbereen Regional Water Supply Scheme	W
Whitegate/Aghada Sewerage Scheme	S
Youghal Water Supply Scheme	W
Water Conservation Stage 3 Works	W

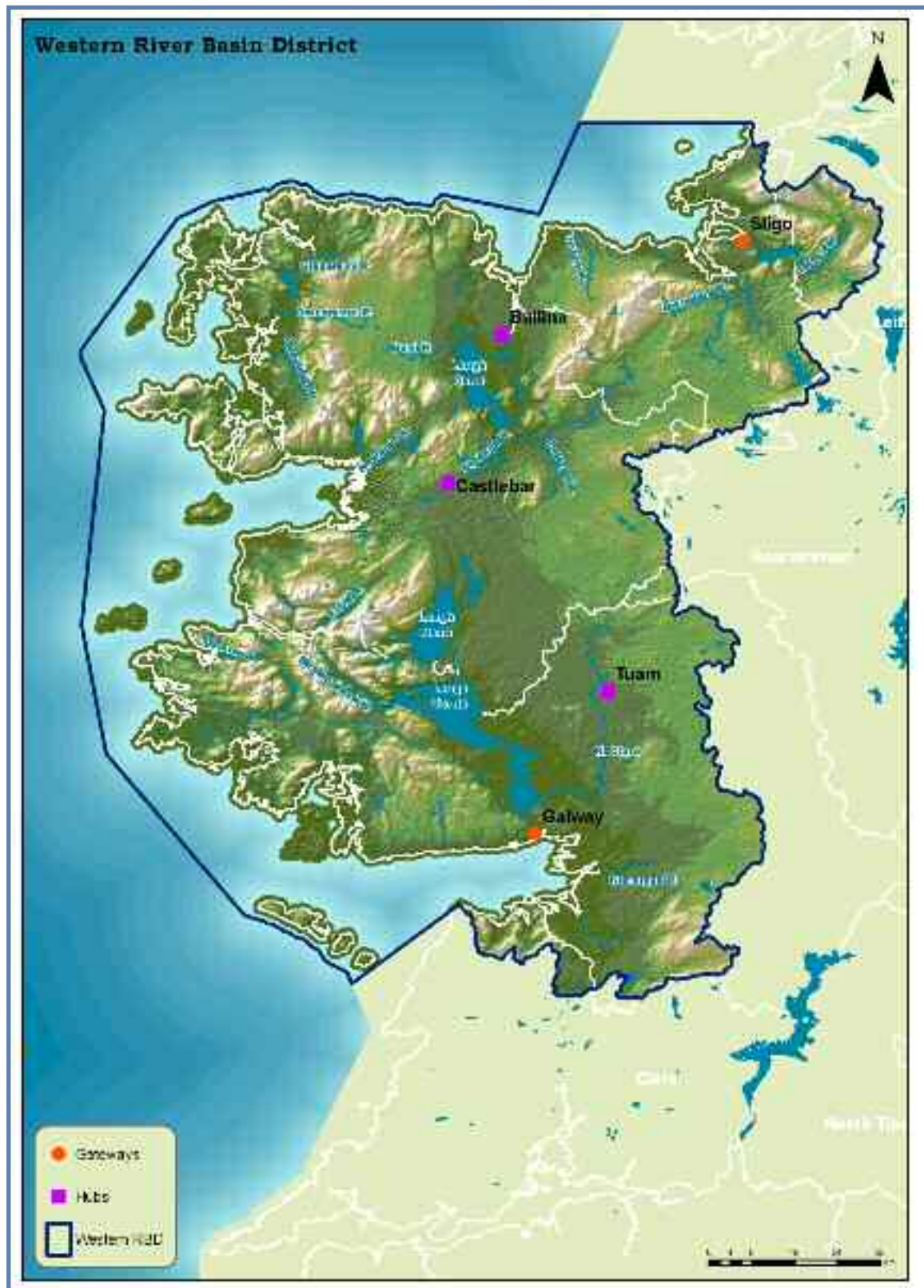
**Kerry**

Castlemaine Sewerage Scheme	S
Glenbeigh Sewerage Scheme	S
Kilcummin Sewerage Scheme	S
Water Conservation Stage 3 Works	W

**Notes:**

- H** refers to a Hub as designated in the National Spatial Strategy
- G** refers to a Gateway as designated in the National Spatial Strategy (Towns in the Dublin local authorities and in Counties Meath, Kildare and Wicklow all fall within the Greater Dublin Area as designated in the National Spatial Strategy)
- S** refers to wastewater infrastructure
- SLI** refers only to contracts approved to commence in the period 2010-2012 under the Serviced Land Initiative, largely arising from contractual commitments, as this initiative is otherwise discontinued.
- W** refers to water supply or water conservation

## Western River Basin District



The Western River Basin District has a land area of 12,193 km<sup>2</sup> with some 2,700 km of coastline. The District incorporates all or part of seven local authority areas: Galway City and County, Mayo, Sligo, Leitrim and small parts of Roscommon and Clare. The District includes the Gateway cities of Galway and Sligo and the Hub towns of Tuam, Ballina and Castlebar, as described in the National Spatial Strategy

Contracts in progress in the District at the end of 2009, together with those contracts prioritised to start and schemes on which planning works will continue over the 2010 – 2012 period are outlined below. The progression of contracts to start and schemes to advance through planning in the district is dependent on compliance with statutory requirements and on the scope of contracts or schemes, as appropriate, fitting within the overall approach and criteria for advancement of water services infrastructure, as outlined in the Programme.

## CONTRACTS AT CONSTRUCTION

Scheme Name	Contract Name	W/S	Estimated Cost €
<b>Galway City</b>			
Galway City Water Supply Scheme (G)	· Terryland Water Treatment Plant Upgrade Stage 2	W	4,236,000
Water Conservation Stages 1 & 2 Works (G)	· Water Conservation Stages 1 & 2 Works	W	11,231,000
<b>Galway County</b>			
Barna Sewerage Scheme	· Contract 1 (Civil Works)	S	6,803,000
	· Contract 2 (M&E Works)	S	723,000
Gort Water Supply Scheme	· Water Treatment Plant Upgrade	W	745,000
Inis Mór Water Supply Scheme	· Water Treatment Plant Upgrade	W	493,000
Mountbellew Water Supply Scheme	· Water Treatment Plant Upgrade	W	482,000
Water Conservation Stages 1 & 2 Works	· Water Conservation Stages 1 & 2 Works	W	8,066,000
<b>Leitrim</b>			
Kinlough/Tullaghan Water Supply Scheme	· Contract 1 (Water Treatment Plant Upgrade)	S	1,897,000
North Leitrim Regional Water Supply Scheme Phase 2	· Network Stage 2	W	1,273,000
<b>Mayo</b>			
Achill Sound Sewerage Scheme	· Contract 1 (Civil Works)	S	6,872,000
Ballina Sewerage Scheme Phase 2 (H)	· Contract 4 (M&E Works)	S	4,856,000
Castlebar Environs Sewerage Scheme (H)	· Contract 3 (Wastewater Treatment Plant - DBO)	S	15,869,000
Kiltimagh Sewerage Scheme	· Contract 2 (Wastewater Treatment Plant - DBO)	S	3,987,000
Water Conservation Stages 1 & 2 Works	· Water Conservation Stages 1 & 2 Works	W	2,809,000
<b>Sligo</b>			
Sligo & Environs Water Supply Scheme Phase 2 (G)	· Kilsellagh Water Treatment Plant Upgrade	W	7,821,000
Water Conservation Stage 3 Works	· Water Conservation Stage 3 Works	W	4,671,000
<b>TOTAL</b>			<b>82,834,000</b>

## CONTRACTS TO START 2010 - 2012

Scheme Name	Contract Name	W/S	Estimated Cost €
<b>Galway City</b>			
Galway Sewerage Scheme Phase 3 (G)	• Network (Advance Works - Vol C)	S	3,500,000
	• Water Treatment Plant Upgrade (Mutton Island)	S	7,000,000
Water Conservation Stage 3 Works (G)	• Watermains Rehabilitation Project Phase 1	W	10,000,000
<b>Galway County</b>			
Athenry Sewerage Scheme	• Network	S	4,528,000
	• Wastewater Treatment Plant Upgrade	S	7,100,000
Ballinasloe Regional Water Supply Scheme	• Network (Ahascragh, Ballinasloe, Kilconnell Advance Works)	W	790,000
Claregalway & Milltown Sewerage Scheme	• Network	S	2,871,000
	• Wastewater Treatment Plant - DBO	S	10,679,000
Clifden Sewerage Scheme Phase 1	• Network	S	565,000
	• Wastewater Treatment Plant Upgrade	S	6,375,000
Clifden Water Supply Scheme	• Water Treatment Plant Upgrade	W	450,000
Costello Regional Water Supply Scheme	• Network	W	4,468,000
	• Water Treatment Plant Upgrade	W	10,832,000
Dunmore/Glenamaddy Water Supply Scheme	• Water Treatment Plant Upgrade	W	537,000
Galway City Western Environs Water Supply Scheme Phase 1 (G)	• Network	W	7,250,000
Inishboffin Water Supply scheme	• Water Treatment Plant Upgrade	W	900,000
Kinvara Sewerage Scheme	• Network	S	1,709,000
	• Wastewater Treatment Plant Upgrade	S	3,091,000
Oughterard Sewerage Scheme	• Network	S	2,800,000
	• Wastewater Treatment Plant Upgrade	S	3,000,000
Tuam Water and Sewerage Scheme (H)	• Network	W/S	27,240,000
Water Conservation Stage 3 Works	• Watermains Rehabilitation Project Phase 3	W	13,770,000
<b>Mayo</b>			
Belmullet, Foxford & Charlestown Sewerage Scheme	• Network & Wastewater Treatment Plants	S	14,300,000
Cong Water Supply Scheme	• Network (Connection to Lough Mask Regional Water Supply Scheme)	W	1,000,000
Killala Sewerage Scheme	• Network & Wastewater Treatment Plant	S	5,100,000
Lough Mask Regional Water Supply Scheme (H)	• Water Treatment Plant Upgrade	W	10,000,000
Water Conservation Stage 3 Works	• Watermains Rehabilitation Project Phase 1	W	6,260,000

**Sligo**

Ballinacarrow Sewerage Scheme (SLI)	· Treatment & Network	S	3,337,000
Cliffoney Sewerage Scheme (SLI)	· Treatment & Network	S	5,047,000
Grange/Strandhill/Tubbercurry Sewerage Scheme	· Wastewater Treatment Plants Upgrades	S	10,800,000
Lough Talt Regional Water Supply Scheme	· Contract 1 (Water Treatment Plant Upgrade)	W	8,750,000
Sligo & Environs Sewerage Scheme (G)	· Network (Rosses Point/Cregg/Ballincar)	S	4,500,000
Water Conservation Stage 3 Works (G)	· Watermains Rehabilitation Project Phase 1	W	4,700,000

**TOTAL**

**203,249,000**

**SCHEMES AT PLANNING STAGES 2010 - 2012**

Scheme Name	W/S
<b>Galway City</b>	
Galway City Sewerage Scheme Phase 3 (G)	S
Galway City Water Supply Scheme (Menlo) (G)	W
Galway City Water Supply Scheme (Terryland Water Treatment Plant - Phase 3) (G)	W
Water Conservation Stage 3 Works	W
<b>Galway County</b>	
Clifden Regional Water Supply Scheme	W
Galway Sewerage Scheme Phase 3 - Vol E (Galway East Infrastructure) (G)	S
Spiddal Sewerage Scheme	S
Loughrea Water Treatment Plant	W
Water Conservation Stage 3 Works	W
<b>Leitrim</b>	
North Leitrim Regional Water Supply Scheme	W
<b>Mayo</b>	
Lough Conn/East Mayo Regional Water Supply Scheme	W
Water Conservation Stage 3 Works	W
<b>Sligo</b>	
Ballymote/Collooney Sewerage Scheme	S
Lough Talt Regional Water Supply Scheme Phase 3	W
Sligo & Environs Sewerage Scheme Phase 2 (G)	S
Water Conservation Stage 3 Works	W

**Notes:**

- H** refers to a Hub as designated in the National Spatial Strategy
- G** refers to a Gateway as designated in the National Spatial Strategy (Towns in the Dublin local authorities and in Counties Meath, Kildare and Wicklow all fall within the Greater Dublin Area as designated in the National Spatial Strategy)
- S** refers to wastewater infrastructure
- SLI** refers only to contracts approved to commence in the period 2010-2012 under the Serviced Land Initiative, largely arising from contractual commitments, as this initiative is otherwise discontinued.
- W** refers to water supply or water conservation

# Appendix 1

## Water Services Investment Programme

### Details of Contracts/Schemes Completed 2007-2009

#### Eastern River Basin District

Local Authority	Scheme /Contract	W/S
<b>Dublin City</b>	Dublin North Fringe Water Supply Scheme (Sillogue Storage)	W
	Dublin Reservoirs Covering Construction - Vartry	W
	Dublin Water Supply Strategic Study (Lead in Water)	W
	Ringsend Sewerage Scheme (Main Lift Pumping Station)	S
	Saggart Water Supply Scheme (Chlorination)	W
<b>Dun Laoghaire Rathdown</b>	Dublin Bay Sewerage Scheme Contract 5.1C	S
	Dun Laoghaire Sewerage Scheme (Contracts 4a & 4b)	S
	Glenamuck/ Kiltarnan Sewerage Scheme	S
<b>Fingal</b>	Balbriggan/Skerries Wastewater Treatment Plant (Phase 2)	S
	Leixlip Ballycoolen Reservoir & Water Tower	W
	Leixlip Ballycoolen Rising Mains	W
<b>Kildare</b>	Kildare Sludge Management	S
<b>Meath</b>	East Meath Coastal Sewerage Scheme (Extension)	S
	Navan AC Watermains Network Phases 2 & 3	W
	Trim Water Improvement Scheme	W
<b>Wicklow</b>	Blessington Wastewater Treatment Plant	S
	Enniskerry Water Supply Scheme	W
	Rathdrum Wastewater Treatment Plant	S
	West Wicklow Water Supply Scheme Stage 1 (Blessington)(Treatment Plant)	W
	Wicklow Sewerage Scheme (Wentworth Place Culvert)	S

## Neagh/Bann International River Basin District

Local Authority	Scheme /Contract	W/S
<b>Louth</b>		
	Collon Sewerage Scheme (SLI)	S
	Knockbridge Sewerage Scheme (SLI)	S
	Louth Village Sewerage Scheme (SLI)	S

## North Western River Basin District

Local Authority	Scheme /Contract	W/S
<b>Cavan</b>		
	Crosskeys, Stradone, Mountnugent Sewerage Schemes	S
<b>Donegal</b>		
	Ardara Sewerage Scheme	S
	Ballyshannon Sewerage Scheme	S
	Brookfield (Donegal Town) Sewerage Scheme	S
	Donegal Bay Waste Water Management Scheme - Group A (DBO Contract - incorporating part of Donegal, Ballyshannon and Rossnowlagh Sewerage Schemes)	S
	Letterkenny Water Supply Scheme	W
	Rossnowlagh Sewerage Scheme	S
<b>Monaghan</b>		
	Rockcorry SLI	W/S

## Shannon International River Basin District

Local Authority	Scheme /Contract	W/S
<b>Clare</b>		
	Newmarket on Fergus Water Supply Scheme (excl. Advance Works)	W
	Tulla Water Supply & Sewerage Scheme	W/S
	West Clare Regional Water Supply Scheme (Contract 6)	W
<b>Kerry</b>		
	North Ardfert Water Supply Source Protection	W
<b>Leitrim</b>		
	South Leitrim Regional Water Supply Scheme Stage 5 Contract 1	W
<b>Limerick County</b>		
	Castleconnell Water Supply Scheme (Upgrade)	W
	Limerick County Water Network (Patrickswell/Adare Stage 1)	W

<b>Limerick City</b>	Limerick Sewerage Scheme (ct 3.7 - Westbury Pumping Station)	S
	Limerick Water Network (Southern Ring Main - City & County)	W
<b>Longford</b>	Drumlisk & Newtownforbes Sewerage Schemes	S
	Edgeworthstown Sewerage Scheme (Nutrient Reduction)	S
<b>North Tipperary</b>	Whitepark/Golden Grove Road Sewerage Scheme, Roscrea (SLI)	S
<b>Roscommon</b>	Lanesboro Rd Roscommon Sewerage Scheme	S
	Towns & Villages Sewerage Scheme (Rehabilitation Contract)	S
<b>Westmeath</b>	Athlone Water Treatment Plant (G)	W
	Clonmellon Wastewater Treatment Plant	S
	Rochfortbridge Sewerage Scheme (SLI)	S

## South Eastern River Basin District

Local Authority	Scheme /Contract	W/S
<b>Kildare</b>	Kildare Water Supply Scheme Phase 1 -Trunk Watermains (Contract 3B - Ardscull to Athy)	W
<b>Kilkenny</b>	Kilmacow Sewerage Scheme - Network (RTVI)	S
<b>Laois</b>	Mountmellick Sewerage Scheme Phase 1 (Advance)	S
	Portlaoise Sewerage Scheme inc. Laois Sludge Management (Network & DBO)	S
	Portlaoise/Mountmellick Water Supply Scheme	W
<b>Offaly</b>	Edenderry Sewerage Scheme (Surface Water)	S
<b>South Tipperary</b>	Clonmel Sewerage Scheme Phase 1	S
<b>Waterford City</b>	Waterford South City Water Supply Scheme	W
<b>Waterford County</b>	Aglish, Piltown, Clashmore, Tallow, Villierstown Sewerage Scheme	S
	Dungarvan Sewerage Scheme	S
	East Waterford Water Supply Scheme Stage 2 Phase 2	W
	Tramore Sewerage Scheme	S
<b>Wexford</b>	Bunclody Sewerage Scheme (Collection System)	S
	Coolgreany Sewerage Scheme - Treatment Plant (SLI)	S
	Coolgreany Sewerage Scheme - Network (SLI)	S
	Gorey Regional Water Supply Scheme - Wellfield	W
	Rosslare Harbour Sewerage Scheme	S
	Wexford Sewerage Scheme (Ext. to Carcur) (H)	S

## South Western River Basin District

Local Authority	Scheme /Contract	W/S
<b>Cork City</b>		
	Cork City Water Supply Scheme (Tivoli)	W
<b>Cork County</b>		
	Ballyvourney/ Ballymakeera Sewerage Scheme (Network)	S
	Buttevant Sewerage Scheme	S
	Cobh/ Midleton/ Carrigtwohill Water Supply Scheme Stages 1&2	W
	Cork North Grouped DBO WWTP Plant (Buttevant, Doneraile & Kilbrin)	S
	Inniscarra Water Treatment Plant Extension Phase 1(Lamaellae Plates)	W
	Kerrypike Sewerage Scheme	S
	Kinsale Sewerage Scheme Phase 3-Scilly	S
	Midleton Sewerage Scheme (Infiltration Reduction)	S
	North Cobh Sewerage Scheme	S
	Schull Sewerage Scheme (Collection System)	S
	Skibbereen Sewerage Scheme Collection System	S
	Spa Glen Sewerage Scheme	S
	Watergrasshill SLI Scheme (Sewerage element)	W/S
<b>Kerry</b>		
	Caherciveen Water Supply Scheme	W
	Kenmare Water Supply Scheme (Collection System)	W
	Lough Leane Catchment Sewerage Scheme- Barraduff Sewerage Scheme	S
	NSS Hub Cluster Sewerage Scheme - Milltown (Collection System)	S
	Waterville Water Supply & Sewerage Scheme (Collection System)	WS

## Western River Basin District

Local Authority	Scheme /Contract	W/S
<b>Galway City</b>		
	Knocknacarra Sewerage Scheme Stage 4	S
	Merlin Park Doughiska Sewerage Scheme	S
<b>Galway County</b>		
	Athenry Water/Sewerage Scheme (SLI)	S
	Carna/Kilkieran Water Supply Scheme	W
	Carraroe Sewerage Scheme - Networks	S
	Craughwell Water Supply Scheme	W
	Dunmore Sewerage Scheme 3 (RTVI)	S
	Gort Water Supply (SLI)	W
	Headford Sewerage Scheme	S
	Kilcolgan Water Supply Scheme	W
	Kilkerrin Sewerage Scheme 3 (RTVI)	S
	Leenane Sewerage Scheme (RTVI)	S
	Loughrea Water Supply Scheme - Ext to Craughwell Phase 1	W

	Loughrea Sewerage Scheme	S
	Roundstone Water Supply Scheme	W
	Tuam Regional Water Supply Scheme (Ext. to Clarinbridge) (H)	W
	Tuam Regional Water Supply Scheme (Ext. to Headford) (H)	W
<b>Mayo</b>		
	Ballina Sewerage Scheme (H) (Collection System)	S
	Ballina Water Supply Scheme (Ext. to Crossmolina) (H)	W
	Castlebar Environs Sewerage Scheme (excl. Advance & Outfall)(H) (Collection System)	S
<b>Sligo</b>		
	Enniscrone Sewerage Scheme	S
	Mullaghmore Water Supply Scheme - Stage 2	W
	Sligo Wastewater Treatment Plant	S
	Teesan/Lisnalurg Sewerage Scheme (SLI)	S

## Appendix 2

### Water Conservation Projects - Contracts at construction

#### Eastern River Basin District

Scheme Name	Contract Name	Estimated Cost €
<b>Dublin City</b>		
Water Conservation Stage 3	· Dublin Region Watermains Rehabilitation Project (Dublin City) Tranche 1	26,642,000
<b>Kildare</b>		
Water Conservation Stages 1 & 2 Works	· Water Conservation Stages 1 & 2 Works	1,561,000
	<b>Total</b>	<b>28,203,000</b>

#### Neagh/Bann International River Basin District

Scheme Name	Contract Name	Estimated Cost €
<b>Louth</b>		
Water Conservation Stages 1 & 2 Works	· Water Conservation Stages 1 & 2 Works	5,354,000
<b>Monaghan</b>		
Water Conservation Stages 1 & 2 Works	· Water Conservation Stages 1 & 2 Works	3,992,000
	<b>Total</b>	<b>9,346,000</b>

#### North Western River Basin District

Scheme Name	Contract Name	Estimated Cost €
<b>Cavan</b>		
Water Conservation Stage 3 Works	· Arvagh Rehabilitation Works	1,128,000
<b>Donegal</b>		
Water Conservation Stages 1 & 2 Works	· Water Conservation Stages 1 & 2 Works	6,048,000
	<b>Total</b>	<b>7,176,000</b>

## Shannon International River Basin District

Scheme Name	Contract Name	Estimated Cost €
<b>Clare</b>		
Water Conservation Stages 1 & 2 Works	· Water Conservation Stages 1 & 2 Works	4,889,000
<b>Leitrim</b>		
Water Conservation Stages 1 & 2 Works	· Water Conservation Stages 1 & 2 Works	1,500,000
<b>Limerick City</b>		
Water Conservation Stages 1 & 2 Works (G)	· Water Conservation Stages 1 & 2 Works	4,435,000
<b>North Tipperary</b>		
Water Conservation Stages 1 & 2 Works	· Water Conservation Stages 1 & 2 Works	4,458,000
<b>Offaly</b>		
Water Conservation Stages 1 & 2 Works	· Water Conservation Stages 1 & 2 Works	3,123,000
<b>Roscommon</b>		
Water Conservation Stages 1 & 2 Works	· Water Conservation Stages 1 & 2 Works	2,652,000
<b>Total</b>		<b>21,057,000</b>

## South Eastern River Basin District

Scheme Name	Contract Name	Estimated Cost €
<b>Carlow</b>		
Water Conservation Stages 1 & 2 Works	· Water Conservation Stages 1 & 2 Works	3,458,000
<b>Kilkenny</b>		
Water Conservation Stages 1 & 2 Works	· Water Conservation Stages 1 & 2 Works	4,800,000
<b>Laois</b>		
Water Conservation Stages 1 & 2 Works	· Water Conservation Stages 1 & 2 Works	2,200,000
<b>South Tipperary</b>		
Water Conservation Stages 1 & 2 Works	· Water Conservation Stages 1 & 2 Works	4,248,000
<b>Wexford</b>		
Water Conservation Stages 1 & 2 Works	· Water Conservation Stages 1 & 2 Works	5,399,000
<b>Total</b>		<b>20,105,000</b>

## South Western River Basin District

Scheme Name	Contract Name	Estimated Cost €
<b>Cork County</b>		
Water Conservation Stages 1 & 2 Works	· Water Conservation Stages 1 & 2 Works	18,364,000
<b>Kerry</b>		
Water Conservation Stages 1 & 2 Works	· Water Conservation Stages 1 & 2 Works	2,882,000
<b>Total</b>		<b>21,246,000</b>

## Western River Basin District

Scheme Name	Contract Name	Estimated Cost €
<b>Galway City</b>		
Water Conservation Stages 1 & 2 Works (G)	· Water Conservation Stages 1 & 2 Works	11,231,000
<b>Galway County</b>		
Water Conservation Stages 1 & 2 Works	· Water Conservation Stages 1 & 2 Works	8,066,000
<b>Mayo</b>		
Water Conservation Stages 1 & 2 Works	· Water Conservation Stages 1 & 2 Works	2,809,000
<b>Sligo</b>		
Water Conservation Stage 3 Works	· Water Conservation Stage 3 Works	4,671,000
<b>Total</b>		<b>26,777,000</b>

# Water Conservation Projects - Contracts to Start 2010-2012

## Eastern River Basin District

Scheme Name	Contract Name	Estimated Cost €
<b>Dublin City</b>		
Water Conservation Stage 3 Works	<ul style="list-style-type: none"> <li>Dublin Region Watermains Rehabilitation Project (Dublin City) Tranche 2</li> </ul>	12,795,000
<b>Dun Laoghaire/Rathdown</b>		
Water Conservation Stage 3 Works	<ul style="list-style-type: none"> <li>Dublin Region Watermains Rehabilitation Project (Dun Laoghaire - Rathdown) Tranches 2 &amp; 3</li> </ul>	20,899,000
<b>Fingal</b>		
Water Conservation Stage 3 Works	<ul style="list-style-type: none"> <li>Dublin Region Watermains Rehabilitation Project (Fingal) Tranche 2</li> <li>Watermain Replacement (Cottrelstown - Oldtown)</li> <li>Watermain Replacement (Kilshane - Glebe)</li> <li>Watermain Rehabilitation (Swords)</li> </ul>	6,465,000 720,000 2,000,000 6,000,000
<b>Kildare</b>		
Water Conservation Stage 3 Works	<ul style="list-style-type: none"> <li>Dublin Region Watermains Rehabilitation Project (Kildare) Tranche 3</li> <li>Non Regional Water Conservation Works Phase 1</li> </ul>	556,000 2,000,000
<b>Meath</b>		
Water Conservation Stage 3 Works	<ul style="list-style-type: none"> <li>Watermains Rehabilitation Project Phase 1</li> </ul>	11,600,000
<b>South Dublin</b>		
Water Conservation Stage 3 Works	<ul style="list-style-type: none"> <li>Dublin Region Watermains Rehabilitation Project (South Dublin) Tranche 2</li> </ul>	5,973,000
<b>Wicklow</b>		
Water Conservation Stage 3 Works	<ul style="list-style-type: none"> <li>Dublin Region Watermains Rehabilitation Project (Wicklow) Tranche 2</li> <li>Watermains Rehabilitation Project Phase 1</li> </ul>	1,646,000 19,000,000
<b>Total</b>		<b>89,654,000</b>

## Neagh/Bann International River Basin District

Scheme Name	Contract Name	Estimated Cost €
<b>Louth</b>		
Water Conservation Stage 3 Works	· Watermains Rehabilitation Project Phase 1	13,600,000
<b>Monaghan</b>		
Water Conservation Stage 3 Works	· Watermains Rehabilitation Project Phase 1	2,500,000
<b>Total</b>		<b>16,100,000</b>

## North Western River Basin District

Scheme Name	Contract Name	Estimated Cost €
<b>Cavan</b>		
Water Conservation Stage 3 Works	· Watermains Rehabilitation Project Phase 1	6,480,000
<b>Donegal</b>		
Water Conservation Stage 3 Works	· Watermains Rehabilitation Project Phase 1	3,100,000
<b>Total</b>		<b>9,580,000</b>

## Shannon International River Basin District

Scheme Name	Contract Name	Estimated Cost €
<b>Clare</b>		
Water Conservation Stage 3 Works	· Watermains Rehabilitation Project Phase 1	6,267,000
<b>Leitrim</b>		
Water Conservation Stage 3 Works	· Watermains Rehabilitation Project Phase 1	1,100,000
<b>Limerick City</b>		
Water Conservation Stage 3 Works (G)	· Watermains Rehabilitation Project Phase 1	7,000,000
<b>Limerick County</b>		
Water Conservation Stage 3 Works	· Watermains Rehabilitation Project Phase 1	3,086,000
<b>Longford</b>		
Water Conservation Stage 3 Works	· Watermains Rehabilitation Project Phase 1	1,850,000

**North Tipperary**

Water Conservation Stage 3 Works	· Watermains Rehabilitation Project Phase 1	3,500,000
----------------------------------	---	-----------

**Offaly**

Water Conservation Stage 3 Works	· Watermains Rehabilitation Project Phase 1	12,231,000
----------------------------------	---	------------

**Roscommon**

Water Conservation Stage 3 Works	· Watermains Rehabilitation Project Phase 1	10,500,000
----------------------------------	---	------------

**Westmeath**

Water Conservation Stage 3 Works	· Watermains Rehabilitation Project Phase 1	10,200,000
----------------------------------	---	------------

**Total** **55,734,000**

**South Eastern River Basin District**

Scheme Name	Contract Name	Estimated Cost €
<b>Carlow</b>		
Water Conservation Stage 3 Works	· Watermains Rehabilitation Project Phase 2	3,000,000
<b>Kilkenny</b>		
Water Conservation Stage 3 Works	· Watermains Rehabilitation Project Phases 1 & 2	15,000,000
<b>Laois</b>		
Water Conservation Stage 3 Works	· Watermains Rehabilitation Project Phase 1	9,000,000
<b>South Tipperary</b>		
Water Conservation Stage 3 Works	· Watermains Rehabilitation Project Phase 1	12,250,000
<b>Waterford City</b>		
Water Conservation Stage 3 Works (G)	· Watermains Rehabilitation Project Phase 3	6,000,000
<b>Waterford County</b>		
Water Conservation Stage 3 Works	· Watermains Rehabilitation Project Phases 1 & 2	8,873,000
<b>Wexford</b>		
Water Conservation Stage 3 Works	· Watermains Rehabilitation Project Phase 1	7,120,000
<b>Total</b>		<b>61,243,000</b>

## South Western River Basin District

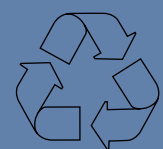
Scheme Name	Contract Name	Estimated Cost €
<b>Cork City</b>		
Water Conservation Stage 3 Works (G)	· Watermains Rehabilitation Project Phase 1	12,200,000
<b>Cork County</b>		
Water Conservation Stage 3 Works	· Watermains Rehabilitation Project Phase 1	23,213,000
<b>Kerry</b>		
Water Conservation Stage 3 Works	· Watermains Rehabilitation Project Phase 1	18,790,000
<b>Total</b>		<b>54,203,000</b>

## Western River Basin District

Scheme Name	Contract Name	Estimated Cost €
<b>Galway City</b>		
Water Conservation Stage 3 Works (G)	· Watermains Rehabilitation Project Phase 1	10,000,000
<b>Galway County</b>		
Water Conservation Stage 3 Works	· Watermains Rehabilitation Project Phase 3	13,770,000
<b>Mayo</b>		
Water Conservation Stage 3 Works	· Watermains Rehabilitation Project Phase 1	6,260,000
<b>Sligo</b>		
Water Conservation Stage 3 Works (G)	· Watermains Rehabilitation Project Phase 1	4,700,000
<b>Total</b>		<b>34,730,000</b>

## **Water Conservation Projects - Schemes at Planning Stages 2010-2012**

Each City/County in all River Basin Districts will pursue a programme of planning for further Water Conservation Stage 3 Works over the 2010-2012 period.



Printed on recycled paper containing a  
minimum of 75% post-consumer waste