

# Let Limerick Surprise you



Comhairle Chontae Luimnigh  
Limerick County Council



# Welcome

Welcome to Limerick, third largest city in Ireland and capital of the Shannon Region. Few Regions offer the magical blend of City and County quite like Limerick. The City of Limerick offers a dazzling selection of shopping opportunities and extraordinary cultural, artistic and sporting events of both national and international importance.

Just a few miles outside the City, County Limerick offers some of the most outstanding countryside anywhere on the Island of Ireland where the landscape is dotted with villages of character and charm and local traditions just waiting to be explored.

Limerick is also home to many famous people including Sir Terry Wogan, Lion's captain Paul O'Connell, the late Frank McCourt and Billy Whelan of Riverdance.

A magical blend of *City*



and County



# Contents

Page

## **Introduction:**

Limerick City	4
Limerick County	5

## **Top 10 Things To See & Do**

Limerick City	6
Limerick County	7

<b>Festivals &amp; Events 2010</b>	8
------------------------------------	---

<b>Landmarks &amp; Attractions</b>	10
------------------------------------	----

<b>Adventures &amp; Activities</b>	28
------------------------------------	----

<b>Wine, Dine &amp; Entertainment</b>	42
---------------------------------------	----

<b>The Best Places To Stay</b>	45
--------------------------------	----

## **Visitor Information:**

Location, Limerick City & County	46
Limerick City Map	48
Limerick County Map	50
Tourist Information Centres	52
Useful Websites & Phone Numbers	53



the people themselves are  
warm, witty & welcoming!



## Limerick City

# The Charm of Limerick City

Limerick is a modern, riverside city with a population of 100,000 people built on a medieval core on King's Island. Limerick, which has a charter older than that of London, is a vibrant, bustling metropolis that continuously reinvents itself, pleasantly surprising the visitor each time they stay. For those on a weekend break or those planning a longer stay; whether you come for some retail therapy or to appreciate Limerick's art and cultural scene; to watch a sporting event or to enjoy a concert, there is a wealth of attractions and activities for you to enjoy. Limerick is synonymous with sport, particularly Rugby and the redevelopment and expansion of Thomond Park, home to the all conquering Munster Rugby Team, is a major draw for the city. From the medieval quarter at King's Island with its castle, cathedral and museum, to the elegant splendour of the Georgian new town, Limerick is brimful with delightful historical and architectural surprises.



## Limerick County Rural Majesty & Splendor

The County of Limerick divides itself neatly into west and east with many contrasting features. The northern boundary is formed by the River Shannon with its wide estuary at the head of which stands the City of Limerick, while the inner parts of the county lie along an attractive fringe of mountains and hills. Some of Ireland's most impressive archaeological and historical sites including the 5,000 year old Neolithic settlement at Lough Gur are located in the county. You will also find a unique museum specialising in the history of aviation in Foynes in the West of the County.

Limerick is both a friendly and inviting place and it is easy to find yourself drawn into conversation or debate by the warmth in the welcome of the locals. In fact, it has often been said that perhaps Limerick's biggest attraction of all is the people themselves who are warm, witty and welcoming! So whether you are visiting city or county, or both, you are sure to enjoy your stay.



# Top 10 Things To

Some of our top ten favourite things to see & do  
in **Limerick City** (but there are more!):

- 1 Visit the world famous **Hunt Museum**, Rutland St., Limerick
- 2 **Thomond Park Rugby Stadium** and **Museum Tour**, Cratloe Road, Limerick
- 3 Get some fresh air in **the People's Park**, Pery Square
- 4 Take the **Angela's Ashes Walking Tour** (departs Limerick Tourist Information Office)
- 5 Browse around the **Milk Market Farmer's Market**, Limerick City
- 6 Visit the historic **King John's Castle**, Nicholas Street, Limerick
- 7 Visit the 11<sup>th</sup> Century **St. Mary's Cathedral**, Bridge Street, Limerick
- 8 Soak up Limerick's Georgian past at **The Georgian House and Garden**, Pery Square, Limerick
- 9 View some fine Irish and International art at **Limerick City Art Gallery**, Pery Square, Limerick City
- 10 Stroll along the new **City Boardwalk** at Clancy and O'Callaghan Strands



## See & Do

Some of our top ten favourite things to see & do in Limerick County (but there are more!):

- 1 Go **Wake-boarding**, Castleconnell, Co. Limerick
- 2 Visit the beautiful **Clare Glens** near Murroe, Co. Limerick
- 3 Visit Ireland's prettiest village, **Adare Village**, Adare, County Limerick
- 4 Explore the hidden histories of **Lough Gur**, Bruff, County Limerick
- 5 Go Horse Racing at **Limerick Racecourse**, Patrickswell, County Limerick
- 6 Get active at the **Mountain Bike Park** in the Ballyhoura Mountains, County Limerick
- 7 Take the glorious **Limerick Garden Trail** (various gardens throughout County Limerick)
- 8 Visit the absorbing **Foynes Flying Boat Museum**, Foynes, County Limerick
- 9 Go **Medieval in Kilmallock**, County Limerick
- 10 Explore the picturesque wonderland that is **Curraghchase Forest Park**, Kilcornan, County Limerick



# Festivals & Events 2010

2010 is going to be a great year in Limerick. Experience great cultural events and rock concerts, the Special Olympics Ireland Games and the JP McManus Golf Pro-Am. There will be something to suit all tastes and interests!

Visit [www.DiscoverIreland.ie/ShannonRegion](http://www.DiscoverIreland.ie/ShannonRegion) for your festival and event guide and check out [www.ShortBreaksIreland.ie](http://www.ShortBreaksIreland.ie) for the latest announcements, special offers and competitions.

**Here is a selection to whet your appetite:**

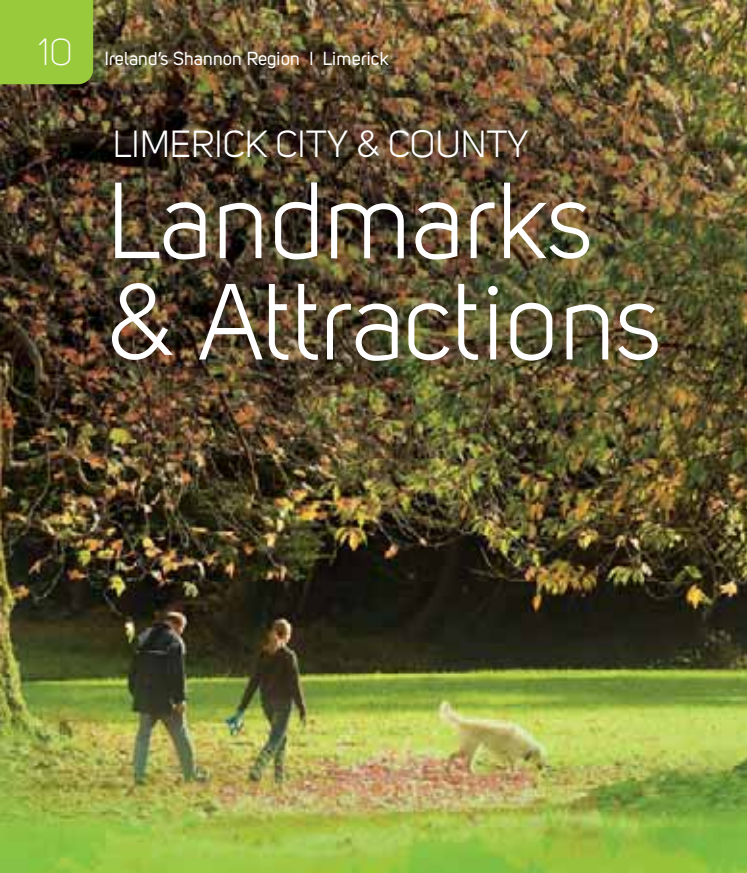
- **Unfringed Festival**, Belltable Arts Centre, Limerick City (January)
- **Kate O'Brien Literary Weekend**, Limerick City Centre (February)
- **Limerick International Band Parade**, Limerick City (March)



- **Limerick Springfest and St. Patricks Day Parade**, (March)
- **EV+A Exhibition**, Limerick City (March - May)
- **Eigse Michael Hartnett Literary Fest**, Newcastle West, Co. Limerick (April)
- **Ballyhoura International Walking Festival**, Co. Limerick (May)
- **Riverfest**, Limerick City (May Bank Holiday Weekend)
- **Great Limerick Marathon**, (May Bank Holiday Weekend)
- **Barbarians Rugby Game vs Ireland**, Thomond Park (June)
- **Athea Road Races**, Athea, Co. Limerick (June)
- **Special Olympics Ireland Games** (June)
- **Pink Concert**, Thomond Park Stadium (June)
- **Twilight Summer Racing Festival**, Patrickswell, Co. Limerick (June)
- **JP McManus Golf Pro-Am**, Adare, Co. Limerick (July)
- **Pig 'n' Porter Tag Rugby Festival**, Limerick (July)
- **Beast of Ballyhoura Adventure Race**, Ballyhoura, Co. Limerick (August Bank Holiday Weekend)
- **Culture Night**, Limerick City Centre (September)
- **Cuise Poetry Festival**, Limerick (September)
- **Lough Gur Storytelling Festival** (October)
- **Georgian Christmas Market**, Pery Square, Limerick City (November)
- **Limerick's Christmas Horse Racing Festival**, Patrickswell, Co. Limerick (December)

LIMERICK CITY &amp; COUNTY

# Landmarks & Attractions

A photograph showing a family of three walking a large white dog in a park. The ground is covered with fallen autumn leaves in shades of red, orange, and yellow. The background is filled with trees with vibrant autumn foliage. The scene is captured in a soft, natural light, suggesting a pleasant day in a park.

Whether you are an art connoisseur, a history and folklore devotee, a people and places buff or simply seeking a day attraction to keep the family entertained, Limerick has a wealth of appealing gems to whet your appetite.

There is so much to see and do throughout Limerick City and County.

*Discover Limerick and  
Let it Surprise You!*



# King John's Castle

King John's Castle is a 13th century Castle on 'King's Island' in the heart of medieval Limerick City. The Castle overlooks the majestic River Shannon offering wonderful views of the area. Explore 800 years of history brought to life in the imaginative historical exhibition, excavated pre-Norman houses, fortifications, siege mines and battlement walks.

King John, as "Lord of Ireland" minted his own coins and the Royal moneyer would have struck the coins in the Castle mint. Today you can receive your own special coin as a souvenir of your visit to the Castle. The sights, scenes and sounds of the Castle and its environs all combine to recreate the atmosphere of the era.

**Contact:** King John's Castle, Nicholas Street, Limerick City.  
t: 061 411201 f: 061 400506

**Opening:** Open year round. 10am - 5pm. Last Admission 4pm. Closed: Dec 24th /25th/26th.  
*Reservations not necessary.*

**Facilities:** Education facilities, Gift Shop, Toilets, Guided Tours available, Main Castle Wheelchair Accessible, Coach and Car Parking nearby.

**Admission:** Adult: €9.00, Child: €5.50, Student/ OAP: €6.65, Family Ticket (2 Adults+2 Children) €20.60

[www.shannonheritage.com](http://www.shannonheritage.com)



# The Hunt Museum



The Hunt Museum was established to house an internationally important collection of approximately 2,000 works of art and antiquities collected by John and Gertrude Hunt during their lifetimes. Among the vast collection, there are artefacts from Greece, Rome, Egypt and the Olmec civilisations. One of the strengths of the collection is the medieval material, which include statues in stone and wood, painted panels, jewellery, enamels, ivories, ceramics, crystal and crucifixes. 18th and 19th century decorative arts are also represented with fine examples of silver, glass and ceramics. Artists' works in the collection include Picasso, Renoir, Roderic O'Connor and Yeats.

**Contact:** The Hunt Museum, Rutland Street, Limerick City  
t: 061 312833 f: 061 312834 e: [info@huntmuseum.com](mailto:info@huntmuseum.com)

**Opening:** Monday to Saturday 10 am - 5 pm,  
Sunday 2 pm - 5 pm Closed: New Year's Day (January 1),  
Good Friday, Christmas Day (December 25), St. Stephen's  
Day (December 26)

**Facilities:** Fully wheelchair accessible, Gift Shop, Restaurant,  
Gallery, Toilets, Guided Tours.

**Admission:** Adult €8; concession (senior and 3rd level  
student) €6.25, Child €4.25, Family €18, Student group  
(primary/ secondary): €4.25

[www.huntmuseum.com](http://www.huntmuseum.com)

# Foynes Flying Boat Museum



The Foynes Flying Boat Museum, housed in the original terminal building in Foynes, Co. Limerick, recalls that nostalgic era when Foynes became the centre of the aviation world from 1939 to 1945. The Museum has a comprehensive range of exhibits and graphic illustrations, where you can learn about the history of the flying boats in an authentic 1940's cinema, featuring the award winning film 'Atlantic Conquest'. The Museum also showcases the original Terminal Building, Radio and Weather Room, complete with transmitters, receivers and Morse code equipment.

**Contact:** The Flying Boat Museum, Foynes, Co. Limerick  
t: 069 65416 f: 069 65416

**Opening:** Open Daily: 10.00h - 18.00h, March 31st - October 31st, last admission 1 hour before closing.

**Facilities:** Gift Shop, Tea Room, Car and Bus Park, Full Wheelchair Access, Multi-lingual Guides.

**Admission:** Adults: €9.00, Seniors/Students: €7.00, Children under 14: € 5.00, Children under 5: FREE, Family Ticket: €25.00 (2 adults and up to 4 children)

[www.flyingboatmuseum.com](http://www.flyingboatmuseum.com)

# Thomond Park Stadium, Museum and Tours

The newly redeveloped stadium is not only where all Munster's Heineken Cup home matches are played but also incorporates a state of the art interactive museum and guided stadium tour which is a real treat for all rugby fans. Take in the history and story of Munster's famous wins, including their two Heineken Cup wins in 2006 and 2008, and their win over the mighty All Blacks in 1978.



**Contact:** Thomond Park Stadium,  
Cratloe Road, Limerick City. t: 061 421100  
f: 061 421101 e: [info@thomondpark.ie](mailto:info@thomondpark.ie)

**Opening:** Both walk in and bookings are welcome. Booking is highly recommended in advance in order to avoid disappointment. Tours operate seven days a week (pre-booking is essential weekends). Tour Times (Monday to Friday): 10.30am, Noon, 2.30pm, 3.45pm \*Opening Times are subject to change.

**Facilities:** Wheelchair accessible, Toilets, Extensive coach and car parking, catering available for 20+ people

**Admission:** Museum Visit and Film: Adult €7, OAP €6, Children €5, Family Package (2 Adults & 2 Children) €20. Stadium Tour (Inc. Museum Visit and Film) Adult €12, OAP €8, Children €10, Family Package (2 Adults & 2 Children) €35. *\*Tours are not available on the day before match days or on match days due to operational requirements.*

[www.thomondpark.ie](http://www.thomondpark.ie)

# Lough Gur Visitor Centre

Lough Gur is one of Ireland's most important archaeological sites. You will be captivated by the beauty, charm and tranquillity of this ancient place. The visitor centre tells the story of Pre-Celtic Ireland dating back to 5,000 BC.

**Contact:** Lough Gur Visitor Centre, near Bruff, County Limerick. t: 061 360788

**Opening:** May - Sept 10.00 am - 5.00 pm. Open daily.  
Last Admission - 4.30 pm. Opening times may be subject to change.

**Facilities:** Coach and Car Parking, Toilets, Snacks available.

**Admission:** Adult €5.00, Child €3.00, OAP / Student €3.30, Family Ticket (2 Adults +2 Children): €14.00, Group Rates available on request.

[www.shannonheritage.com](http://www.shannonheritage.com)

# The Bishop's Palace

Adjacent to King John's Castle, this is the restored home of former Protestant Bishops of Limerick. The Palace has a classical facade and is related to the English Palladian style.

**Contact:** The Bishop's Palace, Church Street, Co. Limerick.  
t: 061 313399 f: 061 315513 e:info@limerickcivictrust.ie

**Opening, facilities & admission:** Please ring ahead

[www.limerickcivictrust.ie](http://www.limerickcivictrust.ie)



# The Georgian House and Garden

The Georgian House is one of a terrace of six houses built c. 1830 by the Pery Square Tontine Company. This terrace is widely regarded as being the best example of late Georgian Architecture in Limerick and probably in Ireland.

No. 2 Pery Square has been fully restored with all its original architectural features expertly reinstated in precise detail. The décor and furnishings are also of the Georgian era. For all visitors to Limerick and for all historic house enthusiasts a visit to No. 2 Pery Square is a must.

**Contact:** The Georgian House and Garden, No. 2 Pery Square, Limerick City. t: 061 314130 f: 061 315513  
e: [info@limerickcivictrust.ie](mailto:info@limerickcivictrust.ie)

**Opening:** Open Monday to Friday: 10.00am to 4pm.  
Weekends by appointment

**Facilities:** Toilets, Guided Tours available

**Admission:** Adults €6, Seniors, Students and Children €4,  
Family (2 Adults+3 Children) €16, Children under 5 free

[www.limerickcivictrust.ie](http://www.limerickcivictrust.ie)



## St. Mary's Cathedral

Founded in 1168 on the site of a palace donated by Donal Mor O'Brien, King of Munster, St. Mary's Church of Ireland Cathedral is the oldest and most historic building in daily use in Limerick. If the stones of this Cathedral could only talk and tell us what has happened here over the centuries, what a story they would tell!



**Contact:** St. Mary's Cathedral, Bridge Street, Limerick City.  
t: 061 310293  
f: 061 315721

**Opening:** 9.30 – 4.30pm  
Mon - Fri. Services only on Sundays.

**Facilities:** Coach parking available.

**Admission:**  
€2 donation accepted.

## St. John's Cathedral

St John's Roman Catholic Cathedral has the highest spire in Ireland at 308 feet and three inches from the base of the tower to the top of the Cross. The Cathedral is an example of Victorian Gothic design. The tower tapers into a spire at 163 feet high. The Cathedral was built in 1861 and has been in continuous use as a place of worship ever since.

**Contact:** St. John's Cathedral, St. John's Square, Limerick City.

**Admission:** Free.  
Donations accepted.



# Adare Village & Adare Heritage Centre

Adare known as Ireland's prettiest village is located on the N21. Among the many gems in the village worth visiting are Desmond Castle (tours available from the Heritage Centre), the Franciscan Priory, the Trinitarian Priory and world renowned Augustinian Priory. Adare is also home to golf courses and equestrian facilities.

Why not step back in time and take a journey through the historical exhibition (based in the Adare Heritage Centre), a reconstruction of Adare's unique past from the arrival of the Normans to the ancient abbeys of the middle-ages. In addition to the historical exhibition, the Heritage Centre is home to a number of gift outlets, Adare's Tourist Information Office, Adare Library and the Dovecot Restaurant.

**Contact:** Adare Heritage Centre, Adare Village, County Limerick. t: 061 396666 f: 061 396932  
e: [info@adareheritagecentre.ie](mailto:info@adareheritagecentre.ie)

**Opening:** Open 9 – 6 daily, some units operate on a seasonal basis.

**Facilities:** Historical Exhibition, Restaurant, Tourist Information Office, Craft Shops, Coach/Car Park, Toilets.

**Admission:** To Historic Exhibition: Adults: €4.50, Group Rates: €4.00, OAP's / Students €3.50. To Castle: Adult €6, OAPS €5, Students and Children €5. Combined Exhibit and Castle ticket: €8

**[www.adareheritagecentre.ie](http://www.adareheritagecentre.ie)**



# Curraghchase Forest Park

Curraghchase Forest Park, operated by Coillte Teo in Kilcornan, Co. Limerick is a fantastic amenity recently upgraded for all the family to enjoy. The park covers 313 hectares of mixed woodlands, park land and lakes which together provide a rich habitat for a diverse range of animals and plants. There are a number of new looped way-marked trails in the park to suit all visitors. They vary from multi-access trails suitable for wheelchair users and family walkers to the longer Curragh and Glenisca trails suitable for those looking for more demanding walking and cycling options.

**Contact:** Curraghchase Forest Park, Kilcornan, Co. Limerick.  
t: 061 396349 f: 061 338271 e: eileen.okeeffe@coillte.ie

**Opening:** Gates close automatically at 10.00pm summer time and at 6.30pm winter time. Recommended that you check gate closure times when visiting the Park.

**Facilities:** Car park, picnic sites, children's playground, forest walks and gardens, Caravan site.

**Admission:** Pay barrier €5 per car.

**[www.coillte.ie](http://www.coillte.ie)**



# University Arena & Sports Museum



The University Arena, located in the University of Limerick campus, on the picturesque banks of the river Shannon, is proud to be Ireland's largest indoor sports complex.

Each year it caters for over 500,000 customers along with many international sports athletes and teams. With easy access from all major regions in Ireland, and with Shannon International Airport only 25 minutes away, the University Arena is the ideal location for all training and competition needs.

**Contact:** University Arena, University of Limerick, Castletroy, Limerick. t: 061 213555 e: [Suzanne.fitzpatrick@ul.ie](mailto:Suzanne.fitzpatrick@ul.ie)

**Opening, facilities & admission:** Please ring ahead

[www.universityarena.com](http://www.universityarena.com)

## Treaty Stone

The Treaty of Limerick concluded the Williamite War in Ireland between the Jacobites and the supporters of William of Orange, in addition to the Siege of Limerick. The Treaty consisted of two accords which were signed on 3rd of October 1691. Reputedly they were signed on the Treaty Stone, an irregular block of limestone which once served as a mounting block for horses. Because of the Treaty, Limerick is sometimes known as the Treaty City. The Treaty Stone is located immediately adjacent to the newly constructed Shannon River Boardwalk.

**Location:** O'Callaghan Strand, Limerick City.



## Glenstal Abbey

In the mellow landscape of Murroe, Glenstal Abbey run by the Benedictine Order, is home to a community of monks, a boarding school and farm. Although the Abbey itself is not open to visitors, the beautiful 500 acre grounds with streams, lakes and woodland paths are. The monks also welcome visitors who wish to come for spiritual respite.

**Contact:** Glenstal Abbey, Murroe, Co. Limerick.  
t: 061 386103

[www.glenstal.org](http://www.glenstal.org)

## Limerick City Gallery of Art

Limerick City Gallery of Art invites you to see the best of contemporary art through the exhibition programme and to enjoy their extensive Collection of Irish art. LCGA is the largest contemporary art gallery in the Mid-Western Region, annually exhibiting national and international artists in a diverse exhibition programme.

**Contact:** Limerick City Gallery of Art, Pery Square, Limerick City. t: 061 310633 f: 061 310228 e: [artgallery@limerickcity.ie](mailto:artgallery@limerickcity.ie)

**Opening:** Monday to Friday 10.00am - 6.00pm, Thursday 10.00am - 7.00pm, Saturday 10.00am - 5.00pm, Sunday 2.00pm - 5.00pm

**Facilities:** Wheelchair accessible, toilets, education facilities.

<http://gallery.limerick.ie/>



## Limerick City Museum

The Museum's collection illustrates the history of Limerick and its people. Its displays include archaeological artefacts, Limerick silver, Limerick lace, examples of local printing, exhibits on the struggle for independence and much more. It is located immediately adjacent to King John's Castle.

**Contact:** Limerick City Museum, Nicholas Street, Limerick City. t: 061 417826 f: 061 415266 e: [bhodkinson@limerickcity.ie](mailto:bhodkinson@limerickcity.ie)

**Opening:** Tuesday to Saturday 10am to 1pm and 2.15pm to 5pm. Closed Sundays, Mondays and Saturdays of Bank Holiday weekends.

**Facilities:** Coach and Car Parking nearby

[www.limerickcity.ie/CityMuseum/](http://www.limerickcity.ie/CityMuseum/)



# Buttercup Visitor Farm

A traditional farm with a large selection of farm animals including Cattle, Sheep, Pigs, Fowl & Exotic Birds. Facilities include a playground, picnic area and horse & cart riding.

**Contact:** Buttercup Visitor Farm, Croom, Co. Limerick  
t: 061 397556 e: info@buttercupfarm.ie

**Opening, facilities & admission:** Please ring ahead

[www.buttercupfarm.ie](http://www.buttercupfarm.ie)

# Stonehall Visitor Farm

Stonehall Visitor Farm is a must for all visitors to the Shannon Region. Located in a tranquil and beautiful rural setting, this tourist attraction allows the visitor to experience first hand the enjoyment and fun of a wide variety of animals in a secure and pleasant setting.

**Contact:** Stonehall Visitor Farm, Kilcornan, Co. Limerick.  
t: 061 393940 f: 061 393940  
e: stonehallvisitorfarm@eircom.net

**Opening, facilities & admission:** Please ring ahead.

[www.stonehallvisitorfarm.com](http://www.stonehallvisitorfarm.com)



## DeValera Museum

The Museum tells the story of the late President Eamon deValera and of the area which formed his character.

**Contact:** DeValera Museum, Bruree, Co. Limerick t: 063 90900

**Opening, facilities & admission:** Please ring ahead

## Kilmallock Museum & History Trail

Explore Kilmallock's Medieval town centre

**Contact:** Kilmallock Museum and History Trail, Kilmallock, Co. Limerick. t: 063 91300

**Opening, facilities & admission:** Please ring ahead

## Limerick Masonic Centre

Masonic Centre deals with the history of the Freemasons of North Munster.

**Contact:** Limerick Masonic Centre, Castle Street, Limerick City. e: [info@freemasonsnorthmunster.com](mailto:info@freemasonsnorthmunster.com)

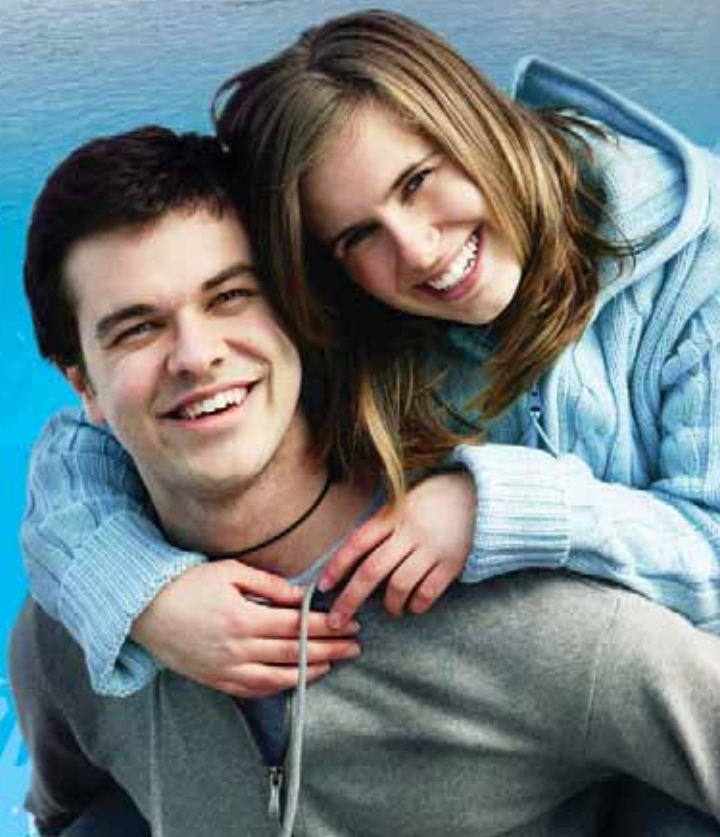
**Opening, facilities & admission:** Please ring ahead

[www.freemasonsnorthmunster.com](http://www.freemasonsnorthmunster.com)

## The Palatine Heritage Centre

The Irish Palatine Heritage Centre houses an exhibition that seeks to re-present in detail the Irish Palatine experience ranging from their German places of origin, to their colonisation and settlement in Ireland.

**Contact:** The Palatine Heritage Centre, The Old Railway Buildings, Ratheale, Co. Limerick, Ireland. t: 069 63511





# Visit Limerick *and* Discover Yourself

Limerick is a fun-filled, action packed destination. It is the ideal place to get away from it all and enjoy the great outdoor holiday experience. This is a sporting county, where one can canoe, climb, hill-walk, fish, walk, go horse-riding or golf in the most beautiful of surroundings.

LIMERICK CITY &amp; COUNTY

# Adventures & Activities



Limerick has an extensive choice of activity providers and facilities to suit your holiday needs. We have everything from Angling to Cycling, Horseriding to Golf and Walking to Gardens. Also, don't forget Limerick's many sporting events and internationally renowned festivals.



# Angling



If the thought of fishing for wild salmon, trout, pike, bream, tench, roach, rudd, perch and dace in beautifully scenic surroundings appeals to you, then a great adventure awaits in Limerick, which has great angling locations. The stretch of the River Shannon at the village of Castleconnell, Co. Limerick in particular, continues to bewitch anglers with its prestigious game angling waters but there are others, including the Mague and the Deel.

## Limerick angling centres include:

### Castle Oaks House Hotel

*Castleconnell, Co. Limerick.*

Angling specialist available to offer advice and make all the necessary arrangements.

**Contact:** t: 061 377666 [www.castleoaks.ie](http://www.castleoaks.ie)

### Celtic Angling

*Paddy Dunworth, The Commons, Ballingarry, Co. Limerick.*

Offering guided angling, heritage and hill walking tours.

**Contact:** t: 069 68202 [www.celticangling.com](http://www.celticangling.com)

### Jim Robinson Angling Centre

*Jim Robinson, 140 Oakleigh Wood, Dooradoyle, Limerick.*

All kinds of angling can be arranged and expert personal guidance and tuition provided.

**Contact:** t: 087 233 9999 [www: iol.ie/~jimrob](http://www.iol.ie/~jimrob)

### Millbank House & Angling Centre

*Richard Keays, Millbank House, Murroe, Limerick.*

Specialising in services for salmon, trout and pike anglers.

**Contact:** t: 061 386115 [www.millbankhouse.com](http://www.millbankhouse.com)

# Cycling



An unbelievable network of roads is waiting to take you through Limerick's scenery. Lowlands with rural villages and towns, castles, historic sites and parks to visit; rugged mountain terrain with superb vantage points and the beautiful Shannon Estuary. A new cycling hub is being launched in Kilmallock for 2010 to complement the Ballyhoura Mountain Bike Trails. See [www.shannonregiontrails.ie](http://www.shannonregiontrails.ie)

## **Ballyhoura Cross Country Trails Bike Hire**

*Kilfinane, Co. Limerick.*

**Contact:** t: 087 2717330

## **Ballyhoura Mountain Biking**

*Catherine Lynch, Ballyhoura Failte Ltd, Main Street, Kilfinane, Co. Limerick.*

Ballyhoura, Co. Limerick is home to Ireland's first mountain biking park.

**Contact:** t: 063 91300 [www.ballyhouracountry.com](http://www.ballyhouracountry.com)

## **Kilfinane Outdoor Education Centre**

*Kilfinane, Co. Limerick.*

A wide range of activities catered for including mountain biking with courses to suit all levels.

**Contact:** t: 063 91161 [www.kilfinaneoeec.com](http://www.kilfinaneoeec.com)

*Comprehensive information on cycling trails prepared by the Regional Tourism Authority - Shannon Development, is available from Shannon Region Tourism Information Offices and also online at [www.shannonregiontrails.ie](http://www.shannonregiontrails.ie)*

# Equestrian



Limerick is famed for its equestrian opportunities. This is horse-riding country and you'll find many equestrian centres, both residential and non-residential in Limerick. State of the art riding centres are located in the most scenic parts of Limerick and offer riding on varying terrain; from forest trails and mountain paths, to rolling pastureland and country lanes. Even those without any horse riding skills are encouraged to have a go, safely under the watchful eye of an experienced instructor. Everyone is welcome!

If you are into racing, located just outside Limerick near Patrickswell on the M20 is one of the most modern horse racing courses in Ireland - Limerick Racecourse. [www.limerickraces.ie](http://www.limerickraces.ie)

## Clarina Riding Centre

*Clarina, Co. Limerick.*

AIRE approved, providing lessons to all ages, pony trekking & summer camps. Outdoor and indoor arena facilities on site.

**Contact:** t: 061 353087 or 087 2479965

## Clonshire Equestrian and Polo Centre

*Adare, Co. Limerick*

AIRE approved providing 5 day programme; pony camp; trail riding and trekking. Tuition available and facilities include an indoor and outdoor arena.

**Contact:** t: 061 396770 [www.clonshire.com](http://www.clonshire.com)



### **Creora Equestrian Centre**

*Betteville, Creora, Co. Limerick.*

Groups of 15 can be catered for at any one time where you will receive expert tuition in an enclosed arena, or you can simply go for a trek. AIRE approved.

**Contact:** t: 061 355721

### **Fitzgerald's Farmhouse and Equestrian Centre**

*The Hill, Abbeyfeale, Co. Limerick.*

AIRE approved providing lessons for beginners, a challenging cross-country course for the more advanced rider and summer camps.

**Contact:** t: 068 31217 [www.fitzgeraldsfarmhouse.com](http://www.fitzgeraldsfarmhouse.com)

### **Hillcrest Equestrian Centre**

*Hillcrest House, Galbally, Co. Limerick.*

AIRE approved providing lessons to all age groups, pony trekking and outdoor arena.

**Contact:** t: 062 37915

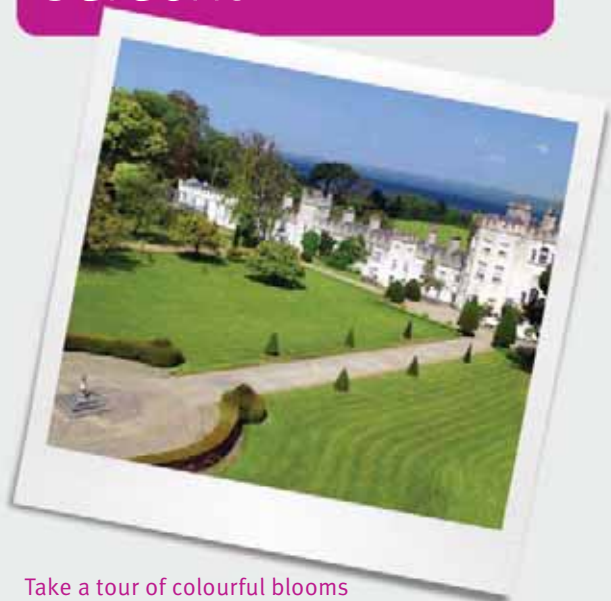
### **Woodview Riding Centre**

*Dually, Newcastle West, Co Limerick.*

Facilities include an outdoor arena and cross country course; tuition in dressage, show jumping and cross-country; Easter and summer camps. AIRE approved.

**Contact:** t: 069 61554 or 086 8440536

# Gardens



Take a tour of colourful blooms along Limerick's Garden Trail which includes a number of award-winning gardens. Most are open daily during the spring, summer and early autumn. The trail which covers all of County Limerick, takes in Ballynacourty, Boyce, Glin Castle, Knockpatrick, Moanwing and the Terra Nova Gardens.

More details together with contact details and opening hours and prices can be found at [www.limerickgardentrail.com](http://www.limerickgardentrail.com)



# Golf



Thanks to nature, some of the finest parkland courses in Ireland are located in Limerick. Here you will find top-quality, world-rated mature parkland courses which are an absolute joy to play on.

## **Adare Manor Hotel and Golf Resort**

**Type:** Parkland. **Holes:** 18

**Contact:** t: 061 605274 [www.adaremanor.com](http://www.adaremanor.com)

## **Adare Manor Golf Club**

**Type:** Parkland. **Holes:** 18

**Contact:** t: 061 396204 [www.adaremanorgolfclub.com](http://www.adaremanorgolfclub.com)

## **Abbeyfeale Golf Club**

**Type:** Parkland. **Holes:** 9

**Contact:** t: 068 32033

## **Castletroy Golf Club**

**Type:** Parkland. **Holes:** 18

**Contact:** t: 061 335753 [www.castletroygolfclub.ie](http://www.castletroygolfclub.ie)

## **Limerick County Golf and Country Club**

**Type:** Parkland. **Holes:** 18

**Contact:** t: 061 351881 [www.limerickcounty.com](http://www.limerickcounty.com)

## **Limerick Golf Club**

**Type:** Parkland. **Holes:** 18

**Contact:** t: 061 414083 [www.limerickgolfclub.ie](http://www.limerickgolfclub.ie)

# Golf

## Newcastle West Golf Club

**Type:** Parkland. **Holes:** 18

**Contact:** t: 069 76500 [www.newcastlewestgolf.com](http://www.newcastlewestgolf.com)

## Rathbane Golf Course

**Type:** Parkland. **Holes:** 18

**Contact:** t: 061 313655 [www.rathbanegolf.com](http://www.rathbanegolf.com)

## Unigolf Club

*National Technology Park, Castletroy, Limerick.*

An innovative indoor golfing facility.

**Contact:** t: 061 633200 [www.unigolfclub.com](http://www.unigolfclub.com)



# Outdoor Activities and Adventures

If adventure is your thing, then Limerick is the perfect place to get the adrenalin pumping with water-sports, mountain biking, paint-balling or go-karting.

## **Ballyhoura Orienteering**

*Ballyhoura Failte Ltd, Main Street, Kilfinane, Co. Limerick.*

A wide range of activities catered for including mountain biking; courses to suit all levels.

**Contact:** t: 063 91300 f: 063 91330 e: [info@ballyhoura.org](mailto:info@ballyhoura.org)  
**[www.ballyhouracountry.com](http://www.ballyhouracountry.com)**

## **Kilfinane Outdoor Education Centre**

*Kilfinane, Co. Limerick.*

Go quad biking, abseiling, windsurfing, rock-climbing, walking, bird-watching, canoeing, kayaking, hill-walking, rock climbing, mountain biking, abseiling, indoor climbing wall, orienteering, team challenges and much more.

**Contact:** t: 063 91161 f: 063 91201  
e: [info@kilfinaneoeec.com](mailto:info@kilfinaneoeec.com) **[www.kilfinaneoeec.com](http://www.kilfinaneoeec.com)**



# Outdoor Activities and Adventures

## Combat Zone

*Shanagolden, Co. Limerick.*

Paintballing in over twenty acres of natural woodland in County Limerick.

**Contact:** t: 061 302031 e: sales@combatzone.ie

**www.combatzone.ie**

## Fun World

*Ennis Road, Limerick.*

Family entertainment centre offering, bowling, arcade amusements & kids play area. Supermacs family restaurant next door.

**Contact:** t: 061 325088 e: funworld@eircom.net

**www.funworld.ie**

## Abbeyfeale Karting Centre

*Mountmahon, Abbeyfeale, Co. Limerick.*

Abbey speedway is currently the largest karting track in Munster.

**Contact:** t: 068 51829 e: abbeyspeedways@gmail.com

**www.abbeyfealekarting.com**



# Tours

Whether you take a guided walking tour of the city's splendour or the county's beauty or take a heritage sports car out for a self guided tour of Limerick's magical countryside, you're sure to enjoy yourself!

## City Walking Tours

Available with Mick O'Donnell (departs Limerick Tourist Information Office: Historic Limerick tour at 11.00am and Angela's Ashes tour at 2.30pm)

**Contact:** t: 087 6353648

## Walking Tours of Askeaton

*Kilfinane, Co. Limerick.*

Guided tours of Askeaton Friary, Desmond Castle and the Hellfire Club.

**Contact:** Anthony Sheehy, tours by appointment.  
t: 061 392149

## Walking Tours of Ballyhoura

*Co. Limerick.*

Ballyhoura Country is a walker's paradise offering spectacular walking in ancient and unspoiled landscapes.

**Contact:** t: 063 91300 f: 063 91330

**[www.ballyhouracountry.com](http://www.ballyhouracountry.com)**

## Heritage Sports Car Hire

*Amiganbeg, Croagh, Co. Limerick.*

Self-drive classic car hire. Take a day out or a week-long tour driving the finest historic motorcars. Bespoke hire packages offered with first class service and support.

**Contact:** t: 069 63770 / 085 7296964

**[www.heritagesportscars.com](http://www.heritagesportscars.com)**



# Walking

Walking is truly the best way to fully absorb the beauty of Limerick. A network of quiet country roads and lanes, forest paths and mountain trails will take you into the heart of beautiful, rural countryside. You'll be spoiled for choice, whether it's a walk in Limerick City, Ballyhoura, the Clare Glens, the Lough Derg Way or the Slieve Felim Way. Each of these walks are shown on the County Limerick map, page 50 & 51.

Detailed information on walking trails is available from Shannon Region Tourism Information Offices and also online at [www.shannonregiontrails.ie](http://www.shannonregiontrails.ie)

## King's Yard

*Kilbehenny, Knocknagalty, Co. Limerick.*

Provides a full range of services for walkers and climbers to the area.

**Contact:** t: 025 84903 or 087 6573276

[www.ballyhouracountry.com](http://www.ballyhouracountry.com)

# Water-Based Activities

The majestic River Shannon offers a choice of calm water or exciting rapids.

## Limerick Wake and Ski

*Castleconnell, Co. Limerick.*

Provides full tuition on Wake and Ski activities.

**Contact:** t: 087 7868689 [www.limerickwakeandski.com](http://www.limerickwakeandski.com)

## Shannon Estuary RIB Tours

*Killard, Ardagh, Co. Limerick.*

Provide a variety of tours including Foynes Island, Shannon Estuary, Historical and Wildlife Tours. Tailored private and commercial trips are also available.

**Contact:** t: 086 8140833 [www.ribtours.ie](http://www.ribtours.ie)

# Spectator Sports

Limerick is famous for its wonderful sporting tradition, and is hailed as Ireland's Sporting Capital. Limerick is widely acknowledged as the spiritual home of Irish rugby. Make sure you get to a game. Gaelic football or hurling, soccer, horse racing and dog racing are also a great way to spend an hour or two Limerick. If you want to partake in some sporting activities, visit the UL Sporting Arena in Castletroy.

## Rugby

[www.thomondpark.ie](http://www.thomondpark.ie)  
[www.munsterrugby.ie](http://www.munsterrugby.ie)  
[www.irfu.ie](http://www.irfu.ie)

## GAA

[www.limerickgaa.ie](http://www.limerickgaa.ie)  
[www.gaa.ie](http://www.gaa.ie)

## Football

[www.limericksoccer.com](http://www.limericksoccer.com)  
[www.limerickfc.ie](http://www.limerickfc.ie)  
[www.fai.ie](http://www.fai.ie)

## Horse Racing

[www.limerickraces.ie](http://www.limerickraces.ie)

## Greyhound Racing

[www.igb.ie/stadia/limerick](http://www.igb.ie/stadia/limerick)



---

# Wine, Dine & Entertainment

---

Award-winning restaurants, buzzing bistros and cheerful cafés serve up high quality meals certain to please the visitor and add a memorable culinary dimension to your stay. Limerick is renowned for its culture, its history and its many tourist attractions, but it is its excellent dining and the diversity and quality of the products on sale throughout the City and County that really set it apart. Visit Limerick and take the time to savour the marvellous creations of talented local artisan food producers, award-winning chefs and purveyors of fine foods who are masters when it comes to combining new flavours and textures which will send you to foodie heaven! Don't forget to check for the good value early bird menus, generally available in most restaurants from 5.00 p.m. to 7.00 p.m.

Call into the Limerick Tourist Information Office, Arthur's Quay Park Limerick or Adare Tourist Office in Adare, Co. Limerick for a full listing of restaurants, cafés and bars or phone 061 317522.

There is always something to do in Limerick, which is virtually bursting with fashionable bars, legendary pubs and rocking nightclubs. Whether you are a fan of music, theatre, opera, ballet or modern dance, Limerick offers these in abundance. The City and County also lay on a compelling menu of festivals and events throughout the year including the internationally renowned EV+A exhibition and Riverfest Festival.





### Great Entertainment Venues Around Limerick

Limerick has a great choice of venues and locations where there is always something going on.

#### **Belltable Arts Centre**

*36 Cecil Street, Limerick City.*

Theatre, cinema, dance, music, visual art & performance.

**Contact:** t: 061 315 871 [www.belltable.ie](http://www.belltable.ie)

#### **Daghdha Dance Company**

*Daghdha Space, St. John's Church, John's Square, Limerick City.* Dance performances

**Contact:** t: 061 467872 [www.daghdha.ie](http://www.daghdha.ie)

## Great Entertainment Venues Around Limerick

*(Continued)*

### Dolan's

*Dock Road, Limerick.*

Concert venue and traditional Irish music pub.

**Contact:** t: 061 314483 [www.dolanspub.com](http://www.dolanspub.com)

### Friar's Gate Theatre

*Kilmallock, Co. Limerick.*

Theatre, concerts & performance.

**Contact:** t: 063 98727 [www.friarsgate.com](http://www.friarsgate.com)

### Honey Fitz Theatre

*Lough Gur, Co. Limerick.*

Theatre & performance.

**Contact:** t: 087 0852022

[www.loughgur.com/honey-fitz-theatre](http://www.loughgur.com/honey-fitz-theatre)

### Limerick Institute of Technology Millennium Theatre

*Moylish Park, Limerick.*

Theatre, opera, ballet & concerts.

**Contact:** t: 061 322322 [www.litmt.ie](http://www.litmt.ie)

### The White House

*O'Connell Street, Limerick City.*

Poetry readings.

**Contact:** t: 061 412377

### University Concert Hall

*Foundation Building, University Of Limerick,  
Castletroy, Limerick.*

Theatre, opera, ballet & concerts.

**Contact:** t: 061 331 549 [www.uch.ie](http://www.uch.ie)



# The Best Places To Stay

## Accommodation

Limerick is a great destination for either holidays or business. The range of accommodation available throughout the City and County stretches from luxurious boutique and midrange hotels to warm and welcoming B&B's; budget hostels to family friendly self-catering options, all offering excellent value for money.

Any of our Tourist Information Offices can assist you with booking accommodation for your stay in Limerick or why not log on yourself.

To get the best accommodation offers check [www.shortbreaksireland.ie](http://www.shortbreaksireland.ie)



## VISITOR INFORMATION

## Location

It is more than 1,000 years ago since the first Viking traders established Limerick as a sheltered seaport at the head of the Shannon estuary. Today, whatever way you come to Limerick, – by plane, train, bus, boat or car – it is easily accessible. Situated just over two hours from Dublin City (M7) and 1.5 hours from Cork (N20) and Galway (N18), Limerick's location on Ireland's West Coast can be easily reached via all major roads.

**Sat Nav reference:**

Limerick Tourist Office  
Adare Tourist Office

**Latitude**

52.6652  
52.5646

**Longitude**

-8.6265  
-8.7893

**Location**

Belfast  
Cork  
Dublin  
Galway  
Rosslare  
Shannon International Airport

**Distance**

201 miles  
65 miles  
123 miles  
65 miles  
131 miles  
15 miles


**Ireland's Shannon Region**

## Getting to Limerick

Shannon International Airport is located 15 miles from Limerick. There are scheduled services from North America, Europe and the UK serving the airport on a daily basis with all the main international carriers. These include Air Lingus, Continental Airlines, Delta and Ryanair. For further information please contact Shannon Airport, t: 061 471444 [www.shannonairport.com](http://www.shannonairport.com)

Limerick is served with excellent rail links, with frequent services from Dublin and Cork. 2010 will see the opening of the new service from Galway and Ennis. For further information and ticketing please contact Irish Rail, t: 061 315555 [www.irishrail.ie](http://www.irishrail.ie)

There are extensive bus services to Limerick from all parts of Ireland through Bus Éireann. For Further information please contact Bus Éireann, t: 061 313333 [www.buseireann.ie](http://www.buseireann.ie)

**By Road:** **N20** (Cork), **N24** (Waterford), **N18** (Galway),  
**N7** (Dublin), **N69** (Tralee)

**Route planners** to help you plan your trip to Limerick are available to download from [www.aaireland.ie/routes\\_beta/](http://www.aaireland.ie/routes_beta/)

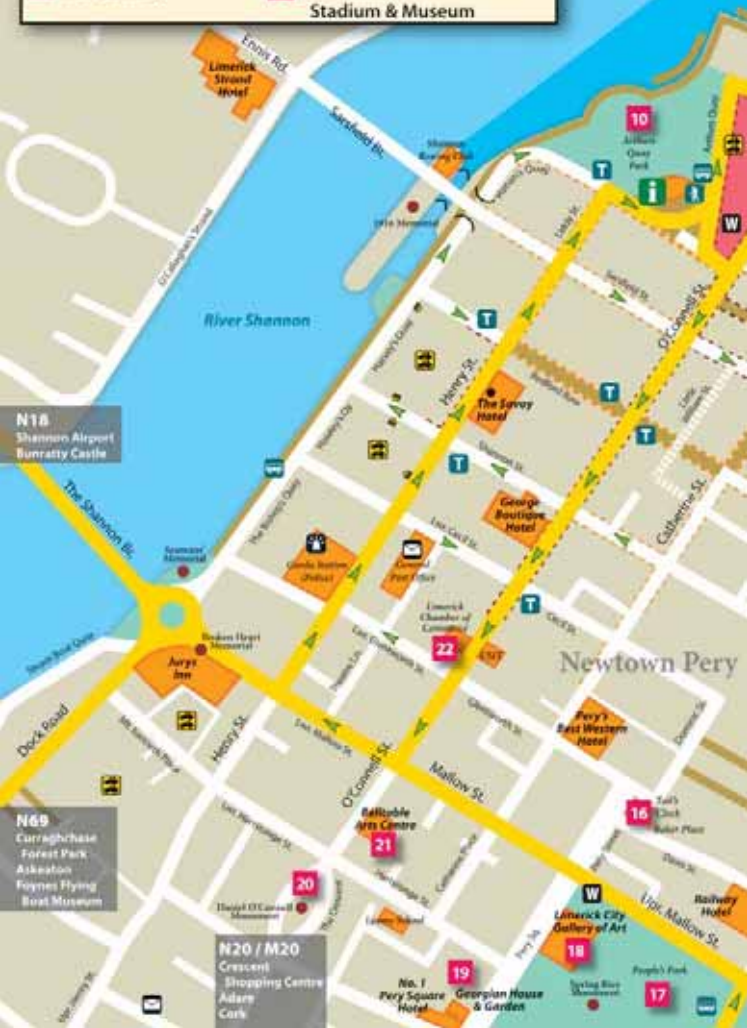


**23** Thomond Park  
Stadium & Museum

**(N18)** Shannon Airport  
Bunratty Castle  
Limerick Institute  
of Technology

## M1 Attractions & Activities in Limerick City

- |                                   |  |
|-----------------------------------|--|
| <b>1</b> Treaty Stone             | <b>13</b> St John's Square                                       |
| <b>2</b> Bishop's Palace          | <b>14</b> St John's Cathedral                                    |
| <b>3</b> King John's Castle       | <b>15</b> Greyhound Racing Track                                 |
| <b>4</b> Limerick Museum          | <b>16</b> Tait's Clock   |
| <b>5</b> Civic Centre & City Hall | <b>17</b> People's Park  |
| <b>6</b> St Mary's Cathedral      | <b>18</b> Limerick City Gallery of Art                           |
| <b>7</b> St Mary's Townhouse      | <b>19</b> The Georgian House & Garden<br>& the Carrol Collection |
| <b>8</b> The Hunt Museum          | <b>20</b> The Crescent   |
| <b>9</b> Old City Hall Buildings  | <b>21</b> Belltable Arts Centre                                  |
| <b>10</b> Arthurs Quay Park       | <b>22</b> Chamber of Commerce                                    |
| <b>11</b> Milk Market             | <b>23</b> Thomond Park<br>Stadium & Museum                       |
| <b>12</b> The Granary             |  |



**N18** Shannon Airport  
Bunratty Castle

**N69** Curraghchase  
Forest Park  
Askeaton  
Foynes Flying  
Boat Museum

**N20 / M20** Crescent  
Shopping Centre  
Adare  
Cork

**19** No. 1 Pery Square  
Hotel  
**18** Limerick City  
Gallery of Art  
**17** People's Park

**R463**  
Kilaloe  
Lough Derg  
Driving Route

**N7 / M7**  
University of Limerick  
Castleconnell  
Munroe  
Dublin

**N24**  
Tipperary  
Waterford  
**R512**  
Lough Gur  
Bruff  
Limerick County  
Golf Club  
Maltrons Hotel

# King's Island

**7**  
St Mary's  
Town House

**6**  
St John's  
Cathedral

**8**  
The Hunt  
Museum

**12**  
Car Library

# Irishtown

**11**  
St. John's  
Market /  
Market Church

**13**  
St John's  
Cathedral

**14**  
St John's  
Cathedral

**15**

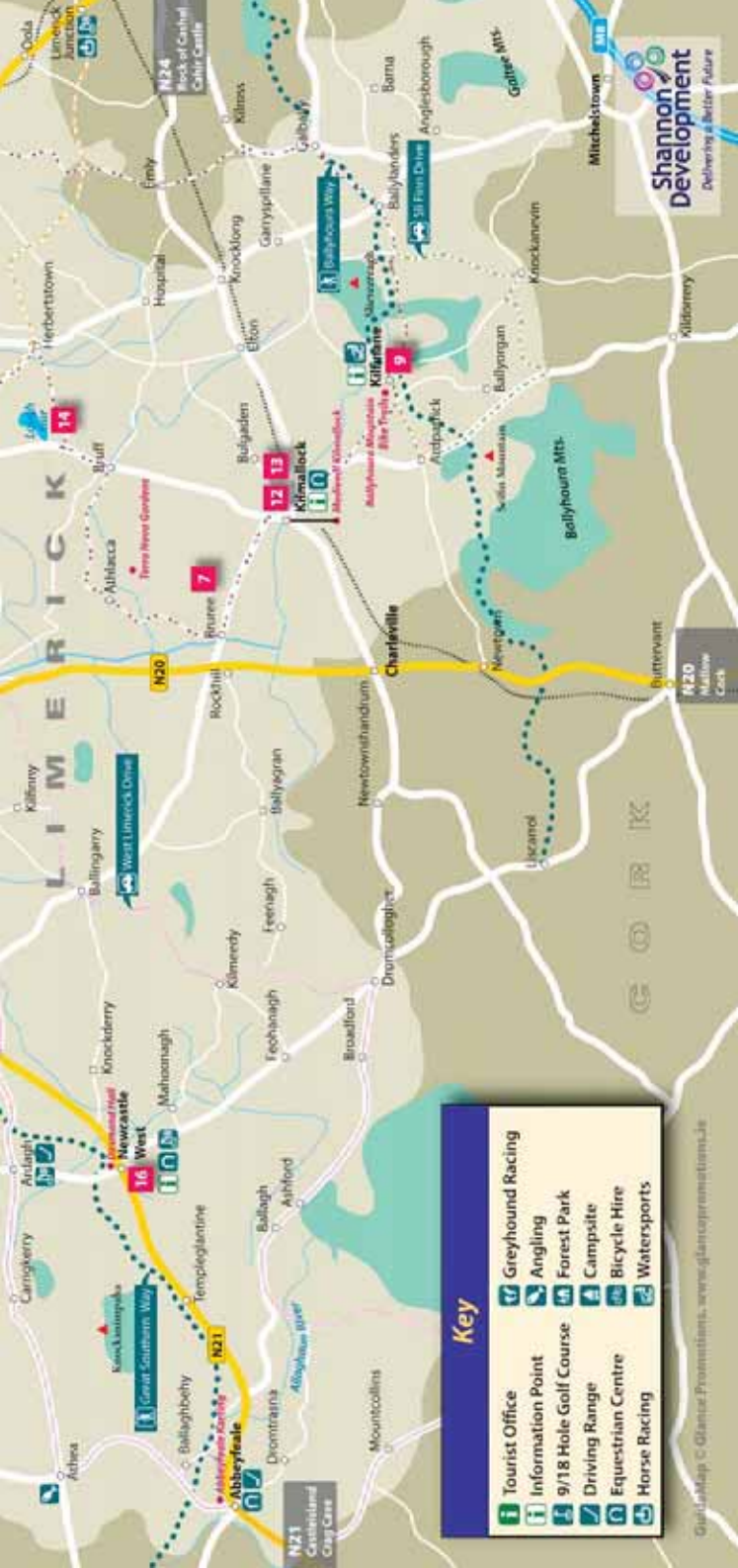
## Key

-  Tourist Information Office
-  Multi-Storey Car Park
-  Car Park
-  Taxi
-  Tour Bus Parking
-  Walking Tours
-  Rugby Stadium
-  Statues / Monuments
-  Post Office
-  Toilet
-  One Way Street
-  Arthur's Quay Centre
-  Main Building
-  Through Road
-  Pedestrian Street

## M2 Attractions & Activities in Limerick County

- |   |   |
|---|---|
| <b>1</b> Adare                                    | <b>9</b> Outdoor Education Centre           |
| <b>2</b> Castleconnell                            | <b>10</b> Glensallick Abbey                 |
| <b>3</b> Boyce Gardens                            | <b>11</b> Glin Castle                       |
| <b>4</b> Askeaton Friary                          | <b>12</b> Kilmallock Museum & History Trail |
| <b>5</b> Stonehall Visitor Farm                   | <b>13</b> Friars Gate Theatre               |
| <b>6</b> Curraghchase Forest Park                 | <b>14</b> Lough Gur Visitor Centre          |
| <b>7</b> deValera Museum & Bruree Heritage Centre | <b>15</b> Tarbert Bridewell                 |
| <b>8</b> Foynes Flying Boat Museum                | <b>16</b> Desmond Hall                      |





**Key**

-  Tourist Office
-  Information Point
-  9/18 Hole Golf Course
-  Driving Range
-  Equestrian Centre
-  Horse Racing
-  Greyhound Racing
-  Angling
-  Forest Park
-  Campsite
-  Bicycle Hire
-  Watersports

# Tourist Information Offices

## **Limerick Tourist Information Office**

Arthur's Quay Park, Limerick

### **Contact:**

t: 061 317522

f: 061 317939

e: [touristofficelimerick@ShannonDevelopment.ie](mailto:touristofficelimerick@ShannonDevelopment.ie)

## **Adare Tourist Information Office**

Adare Heritage Centre, Adare, Co. Limerick

### **Contact:**

t: 061 396255

f: 061 396610

e: [touristofficeadare@ShannonDevelopment.ie](mailto:touristofficeadare@ShannonDevelopment.ie)

# Tourist Information Points (TIP)

## **Askeaton Civic Trust House TIP**

East Square, Askeaton, Co. Limerick

t: 069 66200 / 087 6305922

## **Castleconnell TIP**

Kingfisher Bar, Castleconnell, Co. Limerick

t: 061 377407

## **Foynes Flying Boat Museum TIP**

Foynes, Co. Limerick.

t: 069 65416 f: 069 65416

e: [Margaret@flyingboatmuseum.com](mailto:Margaret@flyingboatmuseum.com)

[www.flyingboatmuseum.com](http://www.flyingboatmuseum.com)

## **Kilfinane TIP**

Main Street, Kilfinane, Co. Limerick

t: 063 91300

## **Newcastle West TIP**

Weigh House, Market Yard, Newcastle West, Co. Limerick

t: 069 62222

## Useful Websites

[www.shortbreaksireland.ie](http://www.shortbreaksireland.ie)  
[www.ShannonDevelopment.ie](http://www.ShannonDevelopment.ie)  
[www.discoverireland.ie/shannonregion](http://www.discoverireland.ie/shannonregion)  
[www.discoverlimerick.ie](http://www.discoverlimerick.ie)  
[www.limerick.ie](http://www.limerick.ie)  
[www.shannonregiontrails.ie](http://www.shannonregiontrails.ie)  
[www.ballyhouracountry.com](http://www.ballyhouracountry.com)  
[www.limerickcoordination.ie](http://www.limerickcoordination.ie)

## Useful Phone Numbers

Emergency	999
Gardai	061 212400
Fire Station	061 407100
Shannon Airport	061 471444
City Hall	061 415799
County Hall	061 496000
Limerick Civic Trust	061 313399
Shannon Doc	1850212999 (out of hours medical services)
Regional Hospital	061 301111
St. John's Hospital	061 415822
Maternity Hospital	061 327455

### Banks

Foreign exchange can be obtained and traveller's cheques cashed in many of the City's banks along O'Connell Street and in some of the larger bank branches in Co. Limerick.

### Post

Limerick General Post Office, 061 316777  
Cecil Street, Limerick City.

### Left Luggage

Luggage can be left 061 313333  
at Colbert Station

---

### Errors and Omissions

*Every care has been taken in the compilation of this guide to ensure its accuracy and compliance with the consumer protection laws of Ireland. Shannon Development cannot accept responsibility for errors or omissions, but where such are brought to our attention future editions will be amended accordingly.*

*We hope you enjoy your visit to Limerick and the Shannon Region.*

*We need to hear your feedback and views, suggestions and recommendations, good service and bad service, highs and lows. Please let us know so we can make your next experience even better.*

*Tell us at [Limericktourism@ShannonDevelopment.ie](mailto:Limericktourism@ShannonDevelopment.ie)*



**Shannon  
Development**

*Delivering a Better Future*

[www.ShortBreaksIreland.ie](http://www.ShortBreaksIreland.ie)  
[www.ShannonDevelopment.ie](http://www.ShannonDevelopment.ie)  
[www.DiscoverIreland.ie/ShannonRegion](http://www.DiscoverIreland.ie/ShannonRegion)